

The Heavenly Herald

660 West Main Street P.O. Box 157 Cheshire, CT 06410

(203) 272-5106 Fax (203) 272-3523

On the Web at <http://www.cheshirelutheran.org>

Email us at: office@cheshirelutheran.org



INSIDE THIS ISSUE:

Visit Our New Website	2
News from the President	2
Ash Wednesday Reminder	2
CLC Calendar	3
February Worship Servants	4
DCE	5
Welcome to the Lords Family	5
All Choirs Schedule	6
Remember our Cherished Congregants	6
Financial Secretary Needs YOU	6
Lenten Soup and Salad Suppers	7
2015 Pledge Packet Reminder	7
2015 Flower Chart	7
Little Cherubs Needs a File Cabinet	7
Are You Missing Any Serving Dishes?	7
News from Our Stewardship Deacon	8
Coffee Hour Help Needed	8
Visit Our New Website	9
Our Sincere Appreciation	9
Assistance for the Hearing	10
Columbarium at CLC	10
CLC Choir News	11
On the Bulletin Board	11
CLC Calendars for 2015	11
This Month in Our History	12
New England District Campus Ministry	12
Bottles and Cans Collections	12
Worship and Weather	12
Support Hope Pregnancy Center	13
Discretionary Fund	13
CLC First Sunday Food Trend	14
Teachers Needed	14
Greeting Card Fundraiser	15
CLC Annual Women's Retreat	15
Helping Hands	15
Plea for Shifu	16
Bible Studies at CLC	17
Thursday Afternoon Ladies	17
News from our Little Cherubs	18
CIH Update	18
Sunday School Lessons this Month	19
February Birthdays	20
February Anniversaries	20
Council Meeting Reminder	20

PASTOR'S MESSAGE

The season is winter. The month is February. The leaves are all gone from the trees for some time and the leafless branches seem to remind us of the nakedness of life. Every once in a while God dresses the trees with the purity of heaven as the fallen snowflakes attach themselves to the cold barren limbs of maples, birches and oaks. It is a vision of beauty that God bestows.

At this time of the year comes the season of Lent. We are reminded of the nakedness of our own lives when we gather on the day of Ash Wednesday. We are told "you are dust, and to dust you shall return." All the clothing we have fashioned and put on; all the care we have taken to beautify our outward appearance, an appearance given us by God, cannot sustain us for we know the winter of our lives will come and to dust we shall return. Lent is that season when we realize that if we do stand before God on our own we stand barren and lifeless. We are as naked as the winter trees. This reality would move some of us to offer repentance with the hope that something can be done. However, the hope is not found in what we can do, even though signs of our repentance may be found in our giving up of things that may mean so much to us at the present time. Yes, we may even make a sacrifice to show God that we realize we have made a mess out of the life he has formed from the dust of the earth. It is an outward sign of contrition expressing no sense of hope but a true sense of sorrow.

Yet, Lent affords us a period of time to learn about God's love toward us. It is a season when we are to focus upon God's grace and mercy and his almighty ability to make new. We learn about God's love for us as we meditate upon His Son's words to us, words about life in a season

that would remind us about the imminent nature of our own death. We see God's love for us unfold itself in the drama of Christ's life that will take us to the close of Lent as it is merged into the end of a week we would call "Holy." The outcome of that week is the reason we have hope. The outcome of that week is expressed in a righteousness that falls upon us and dresses us in a purity we do not deserve but which God places upon us as he does with snow upon the trees of winter.

This month our national community may remember the presidents who served our nation in times of great need, Lincoln and Washington respectively; some people may gather around televisions or other forms of media to await the news offered because of the forward looking ability of some ground hog from Pennsylvania and a number of people will be touched by the acts of love associated with the day of St. Valentine. However, there will be many who remember the Lord and his love toward them, a love that gives them a hope of life that is joyful and eternal. They will gather to begin a season known as Lent understanding that they come before the creator as dust; yet realizing their hope is to be found in the one who rose from the dust of the earth that they might share in the purity that is life.

We gather for the imposition of ashes on February 18th at 7:30pm to begin our Lenten journey. Come and join us.

In Christ,

Pastor G

February 18th is Ash Wednesday!

Come Worship With Us**Sunday Worship Services:**

8:00 am & 10:30 am
(Nursery Care Available -
10:30 am)

**Sunday School
&
Adult Bible Classes:**
9:10 am

Summer Worship Service:
9:00 am
(Fathers Day to Labor Day)



The Heavenly Herald
is published for members and
friends of Cheshire Lutheran
Church.

Church Staff

Rev. Charles Gustafson-Pastor

Carol Santoro-Office Manager

**Martha Medford-Organist &
Choir Director**

**Andrew Schaefer - Director of
Christian Education**

Bill Sherman-Parish President

Beth Soulier-Editor

NEWS FROM THE PRESIDENT*AND THE CHURCH COUNCIL*

Was that an invitation, or was it a command? I hope you'll find a few ways to put your resolutions into action; at CLC, we have plenty of ways that you can!

On Sunday, January 11th, we held our annual corporate meeting of the congregation after each of our worship services. If you were not in attendance, you may obtain a copy of the annual report and financial statement in the church office, or ask one of the officers, deacons or ushers to obtain a copy for you. Although I could not recite all of the details in the report during our meeting, I hope each member will have reviewed the report for the many ways that we as a congregation exhibit our faith, service and fellowship to one another and the greater community beyond our walls.

How are you progressing so far on your 'new year resolutions'? Was one of them to help out with a CLC committee or a particular mission project? Was one to attend an adult Bible study? Was one to bring your child regularly to church and Sunday School? Was one to invite a friend, a new neighbor or even a stranger to a worship service or fellowship event? The Gospel lesson from John and Pastor's sermon a few weeks ago included the message of Philip to Nathaniel "Come and see". Was that an invitation, or was it a command? I hope you'll find a few ways to put your resolutions into action; at CLC, we have plenty of ways that you can!

As I mentioned in the annual meeting, congregation members are welcome to attend any of our Council or Voters meetings to see and hear more of the details of mission and ministry as they are discussed, planned and reported on. The full schedule of our meeting dates for 2015 was published in the annual report and meetings are also announced 2 weeks in advance. The meeting schedule for the near term is as follows:

Council
Voters

Tuesday, February 10 at 7:00pm
Monday, March 16 at 7:00pm

See you in church!

Bill

William C. Sherman
Parish President, CLC

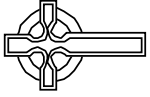
FEBRUARY 18TH ..ASH WEDNESDAY!

Lent begins on February 18th. We will have a service at 7:30 PM to begin this penitential season. Once again ashes will be offered to all who would like to receive them as part of their Lenten discipline.

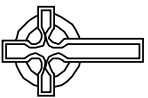
Throughout the season of Lent we will continue to offer worship services on Wednesdays at 7:30 PM until Holy Week.

We will also gather at 6 PM each Wednesday for soup, salad, fellowship and Bible study beginning Wednesday March 12th. We invite all to join us and encourage you to invite friends or neighbors to attend our evening fellowship with you. Our hope and desire is that you will take the time to worship and to join us in fellowship during this time of Lenten meditation and discipline.





GA Galigndar



February

February Servants

Senior High Youth Group:

2015 is well under way and we will continue to gather in the month of February! During the month of February we will be beginning our Lenten Worship with a soup dinner prior to Worship. I would like to encourage you to attend these as it is an opportunity to worship and, of course, eat some free food. We will also be meeting bi-weekly. I look forward to seeing you guys on the important dates below!

Important Dates for the Senior High Youth:

- ✠ **February 1st - CrossRoads @ 7pm to 8:30pm**
- ✠ **February 15th - CrossRoads @ 7pm to 8:30pm**
- ✠ **February 27th - CrossRoads Lock-In @ 7pm to 7am (28th)**

30 Hour Famine - Stop eating at 1am on 27th Breakfast at 7am on the 28th

LENT:

- ✠ February 18th - Ash Wednesday Worship @ 7:30pm
- ✠ February 25th - Lenten Supper/ Worship @ 6pm
- ✠ March 4th - Lenten Supper/ Worship @ 6pm
- ✠ March 11th - Lenten Supper/ Worship @ 6pm
- ✠ March 18th - Lenten Supper/ Worship @ 6pm
- ✠ March 25th - Lenten Supper/ Worship @ 6pm

Junior High Youth Group:

2015 is well under way and we will continue to gather in the month of February! During the month of February we will be beginning our Lenten Worship with a soup dinner prior to Worship. I would like to encourage you to attend these as it is an opportunity to worship and, of course, eat some free food. Note the dates below that we will meet during Lent. I look forward to seeing you guys on the important dates below!

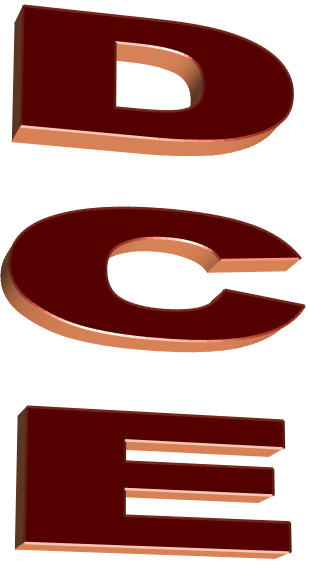
Important Dates for the Junior High Youth:

- ✠ **February 4th - High Impact @ 7:10pm to 8:30pm**
- PB&J service project*
- ✠ **February 19th (THURSDAY) - High Impact @ 7:10pm to 8:30pm**
- ✠ **February 20th-22nd - Junior High Retreat Time TBD**

Keene, NH—More information to come in February

LENT:

- ✠ February 18th - Ash Wednesday Worship @ 7:30pm
- ✠ February 25th - Lenten Supper/ Worship @ 6pm
- ✠ March 4th - Lenten Supper/ Worship @ 6pm
- ✠ March 11th - Lenten Supper/ Worship @ 6pm
- ✠ March 18th - Lenten Supper/ Worship @ 6pm
- ✠ March 25th - Lenten Supper/ Worship @ 6pm



PLEASE WELCOME OUR NEWEST MEMBER TO THE LORD'S FAMILY...

We celebrate together as ***Ella Jane Napp*** was baptized into the Lord's family on Sunday January 25, 2015.

We welcome you into the Lord's family. We receive you as a fellow member of the body of Christ, child of the same heavenly Father, and worker with us in the kingdom of God.



CLC ALL CHOIRS REHEARSAL & PERFORMANCE SCHEDULE...

Date	Time	Event	Choir
February 4 - Wednesday	6:30 PM	Rehearsal	Youth Choir
	7:15 PM	Rehearsal	Bell Choir
	8:00 PM	Rehearsal	Parish Choir
February 8- Sunday	10:10 AM	Rehearsal	Youth Choir
	10:30 AM	Performance	Youth Choir
February 11 - Wednesday	6:30 PM	Rehearsal	Youth Choir
	7:15 PM	Rehearsal	Bell Choir
	8:00 PM	Rehearsal	Parish Choir
February 15- Sunday	9:40 AM	Rehearsal	Bell Choir
	10:10 AM	Rehearsal	Parish Choir
	10:30 AM	Performance	Bell and Parish Choirs
February 18 - Wednesday <i>Ash Wednesday</i>	6:30 PM	Rehearsal	Youth Choir
	7:00 PM	Rehearsal	Parish Choir
	7:30 PM	Performance	Parish Choir
February 19 - Thursday	7:30 PM	Rehearsal	Bell Choir
February 22 - Sunday 1st Sunday in Lent	10:05 AM	Rehearsal	Youth Choir
	10:30 AM	Performance	Youth Choir
February 25 - Wednesday 1st Wednesday in Lent <i>Midweek Lenten Service</i>	6:30 PM	Rehearsal	Youth Choir
	7:00 PM	Rehearsal	Soloist
	7:30 PM	Performance	Soloist
	After Service	Rehearsal	Parish Choir
February 26 - Thursday	7:30 PM	Rehearsal	Bell Choir



REMEMBER OUR CHERISHED CONGREGANTS!...

There are members of our congregation who are unable to attend weekly worship. You can help them to know they are a part of our fellowship by stopping by, sending a card or making a phone call.

Edith Wnuck
c/o Highland Health Center
745 Highland Avenue
Cheshire, CT 06410

John Luchene
c/o Highland Health Center
745 Highland Avenue
Cheshire, CT 06410



FINANCIAL SECRETARY COMMITTEE NEEDS YOU...

The Financial Secretary is always in need of volunteers to aid in counting church offerings after the 9:00 AM Sunday services. If you are available 4 - 6 times per year for approximately one hour, please contact Bill Soulier!

LENTEN SOUP AND SALAD SUPPERS...

This year Lent begins on February 18th and each Wednesday, starting on February 25th, at 6:00 pm we will gather for soup, salad, fellowship and Bible study. We invite all to join us and encourage you to invite friends or neighbors to attend our evening fellowship with you.

The meals will be followed by bible study and conclude with our 7:30 pm Lenten Service in the church. Our hope and desire is that you will take the time to worship and to join us in fellowship during this time of Lenten meditation and discipline.

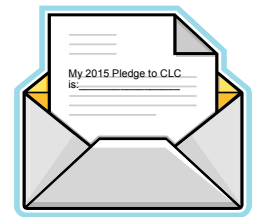
The sign-up sheet will be on the bulletin board for those who want to attend, prepare the delicious soups or help in the set up or cleanup. It is a great way to prepare for the Lenten season.

If you have any questions contact Karen Weiland at 203-250-1574



PLEDGE PACKETS FOR 2015...

Pledge Packets for 2015 are here. Please assist CLC in planning and meeting our financial obligations by returning your pledge card to the church as soon as possible. Thank you!



2015 FLOWER CHART...

If you would like to place flowers on the altar on a particular Sunday, please sign up on the Flower Chart which is hanging on the Bulletin Board.



ARE YOU MISSING ANY SERVING DISHES?

Please take a look on the table outside the Kitchen for dishes that you may have left behind.



NEWS FROM OUR STEWARDSHIP DEACON...



Year-end offering statements have been submitted to the family units and individuals who contributed to CLC during 2014. Of course this does not speak to the number of contributors who make contributions but who do not make use of offering envelopes. For those who do not use our offering envelopes, I encourage you to please consider doing so to share in our gratitude and for your personal tax purposes. Please notify our church secretary, Carol Santoro if you would like an envelope.

As of 1/14/15, 67 pledges have been received toward our Mission Plan for 2015. This represents slight increase from last year. Thank you to those who have pledged, as well as to all that are able to contribute, for your generosity and stewardship. If you would still like to make a pledge, it is not too late to do so.

As I have stated before, the generosity of this congregational is always inspiring and I look forward to a joyous and wonderful 2015.

Sincerely,

David Veleber
Stewardship Deacon



SUNDAY MORNING COFFEE HOUR VOLUNTEERS NEEDED...

Sunday morning coffee hour volunteers needed! In an effort to keep this much anticipated fellowship going, we need volunteers. Can you help set up coffee a few Sunday's during the year? Purchase or make baked goods to be served? Baked goods may be brought in at any time and placed in the freezer so we have something to serve every Sunday. Kindly sign-up on the Bulletin board and if you have questions you can contact the office. Thank you!

INSTALLATION OF CHURCH COUNCIL...

On Sunday January 5, 2014, CLC installed the following Deacons and Officers:

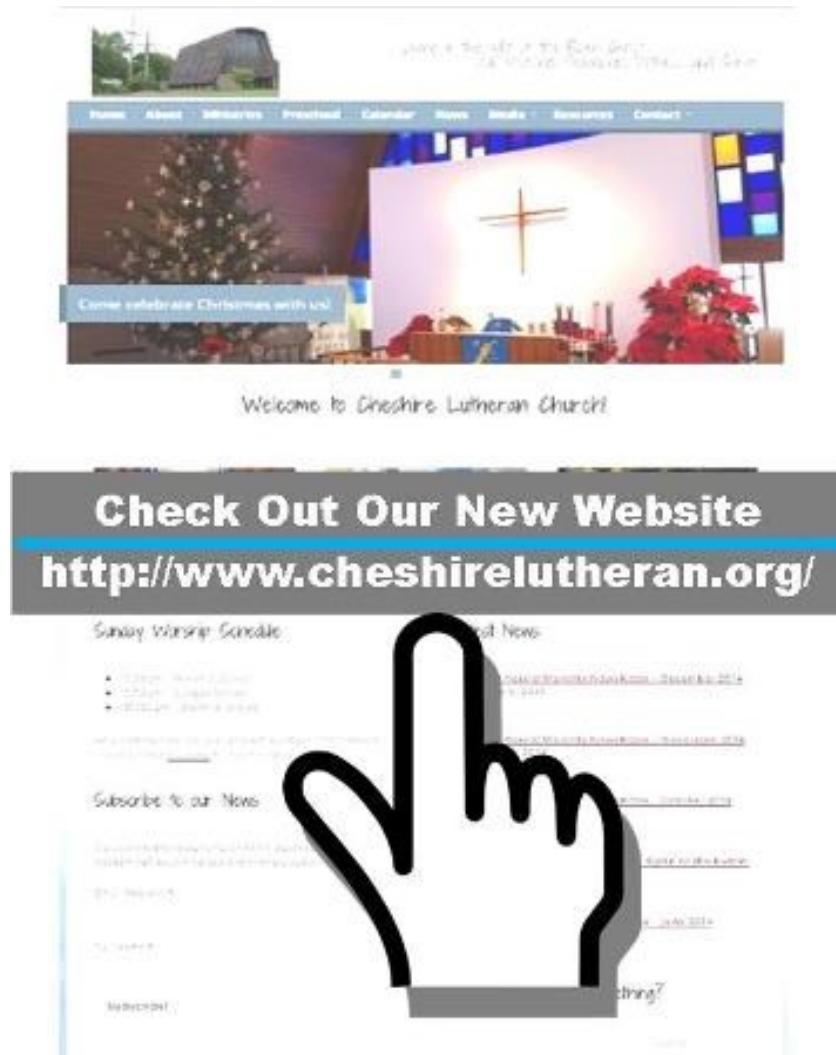


President	William Sherman
Vice President	Jeff Mann
Recording Secretary	Emese Gall
Financial Secretary	Bill Soulier
Treasurer	Karen Smith
Deacon of Christian Growth Fund	Alan Santoro
Deacon of Education	Jonathan Schrumm
Deacon of Evangelism	John Balash
Deacon of Fellowship	Karen Weiland
Deacon of House & Grounds	Todd Plantier
Deacon of Social Welfare	Vicki DePaolo
Deacon of Stewardship	David Veleber
Deacon of Worship	David Schrumm
Deacon of Youth	TBD

May God Bless their important works! We are very grateful for their wonderful talents and dedication! Heartfelt thank you to out-going council members who have faithfully served our congregation: Jim Schaff, Peter Nizich, Steve Minicozzi. Well done, good and faithful servants!

VISIT OUR NEW WEBSITE...

When you get a chance, visit our new website. Thanks to Steve Ferro's hard work our new Website was launched last month. It has a sleeker look and much easier to find what you are looking for. You can find the latest news and information, see the great pictures our Church photographer takes regularly and even view the Heavenly Herald in full color.



Our Sincere Appreciation

- ✚ Many thanks to the Ladies for assembling the January Heavenly Herald! HUGS!
- ✚ Special thanks to everyone who helped take down the Christmas decorations and Tree this year. Many hands do make light work!
- ✚ Bill Soulier, our Financial Secretary wishes to thank all the volunteers that helped him with the offerings last year. Could not have done it w/o you. Thank you for your continued support and dedication. Bill





SUNDAY WORSHIP ASSISTANCE FOR THE HEARING IMPAIRED ...

A hearing assistance system (Williams Sound Corporation) and four receivers have been donated to CLC. A receiver (hearing aid) may be obtained from any usher. Please feel free to ask for one and make sure you return to an usher at the end of the service so it can be returned to its proper storage place for use at another time.

COLUMBARIUM BEING PROPOSED AT CLC...

A Columbarium is a wall or other free standing (usually stone) structure, lined with recesses for the placement of urns that contain the cremated ashes of the deceased.



A significant number of CLC members have expressed an interest in the church exploring the possibility of constructing a columbarium on site, to allow for members and their families to have a final resting place here on CLC grounds. There would also be an opportunity for members and their families who have already lost a loved one, who is interred elsewhere, to have a memorial plaque placed on the columbarium.

The project will be self-funded, with proceeds from members and their families who choose to be a part of the project. The funds would be used to construct and maintain it. The project would not use existing CLC funds. It is expected that the cost to be interred would be similar to a burial at a local cemetery, or about \$1,000 per recess. Memorial plaques for those interred elsewhere would be half that amount.



It is envisioned that the Columbarium would be located in the area of the Reflection Garden located at the rear of our property. It is a beautiful spot and the existing landscaping allows for a natural, quiet spot for visitors to visit and meditate. Of course other locations on the property could be considered.

There are many types of columbariums. We have included one example below from a church in Southbury. The individual urns are placed in recesses inside the wall, and the plaque identifying the location of the person is installed on the top of the wall. If a columbarium were to be built here, it would be the combined vision of a planning committee that would look at all options available.

Please take some time to think about this important subject. There was an informational meeting held on Sunday January 25th at CLC. The purpose of that meeting was to explain the project in greater detail, and to entertain questions from members. The goal of the meeting was to determine if there is sufficient interest to proceed with further planning for this project. Several members have signed on to form a committee to take this to the next step which is to gather all the information and present to the Voters. If you were not able to attend that meeting, but have an interest in knowing more about a columbarium, please contact either Pat DiDomizio (203-881-8399 and jdidomzio@aol.com) or Buzz Gancarz (860-302-1643 and gancarz@cox.net) to share your thoughts.

Additionally, if you are struggling with the concept of cremation of your final remains, speak with Pastor G or Pastor N for clarification on our beliefs as Lutheran Christians.

CLC CHOIR NEWS...

All Choirs rehearse on Wednesday evenings as follows:

- 6:30 PM – Youth Choir
- 7:15 PM – Adult Bell Choir
- 8:00 PM – Parish Choir

The Parish Choir sings on the 1st, 3rd & 5th Sundays and the Youth Choir performs on the 2nd and 4th Sundays each month. Both Choirs usually sing at the 10:30 but sometimes are asked (mostly Parish) to sing at the 8:00 service as well.

The Bell Choir will perform on special occasions 5-7 times throughout the year.

Each choir is praying for new members. Please consider joining, you will be happy you did! No experience necessary!

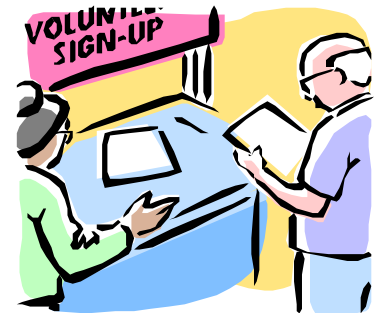


ON THE BULLETIN BOARD:

Remember to check the Bulletin Boards and/or hallway table for sign-up sheets and information about various events!

This month on the Bulletin Board:

- † CLC Little Blessings Nursery Needs Volunteers
- † Give Your Old Car A Good Home **Good News Garage** information
- † Cheshire Food Drive Volunteer info. and sign-ups
- † Hope Center 2015 volunteer sign-ups
- † 2015 Usher Schedule
- † Little Cherubs enrollment information



Others looking for help!

- † **Helping Hands** - Contact Christine Smith if you would like to be a member of the helping hands committee.
- † **All Choirs** rehearse on Wednesday evenings as follows:
 - 6:30 PM – Youth Choir
 - 7:15 PM – Adult Bell Choir
 - 8:00 PM – Parish Choir

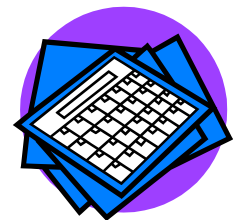
Each choir is praying for new members. Please consider joining, you will be happy you did!

- † **Sunday Morning Coffee Hour Fellowship:** Looking for members to help out with this wonderful fellowship. Contact the office!
- † **Sunday School Teachers Needed**—Prayerfully consider serving our congregations children by volunteering to Teach them a few Sunday mornings during the year. See Carlene Myers or Andy.



CLC CALENDARS FOR 2015...

2015 Calendars are here. The calendars are a gift to our congregation compliments of the Alderson Ford Funeral Homes. You are welcome to pick up a copy from our hallway counter or narthex table.





THIS MONTH IN OUR HISTORY!...

A monthly glimpse of the history of your Cheshire Lutheran Church:

March 30, 1958	Congregation chartered on Palm Sunday, with 71 communicants received as charter members
March 1960	The Rev. Darrel Geitz released to accept call to Our Savior and Messiah Lutheran Church in Evansville, Indiana
March 1979	Church Fellowship Hall and Sunday School rooms construction commenced

NEW ENGLAND DISTRICT CAMPUS MINISTRY WORKSHOP...

Save the Date

**New England District Campus Ministry Workshop on Saturday, February 7
At Hope Lutheran Church, Storrs, Connecticut**

The workshop is open to everyone interested in college students and campus ministry including congregational members, college students, parents of students, parish leaders, pastors and church workers.

The workshop presenter is Rev. Marcus Zill, LCMS Director of Campus Ministry and LCMSU. LCMSU is an initiative to connect and support Lutheran students as they head off to college and face countless challenges to their biblical worldview, doctrine, ethics and practices. LCMS U also provides a place to connect and encourage parents, congregations and campus ministries as they seek to care for students, so that all can boldly bear witness to Christ on the nation's college campus.

Registration information for the workshop will be available in early January. For more information please contact Deaconess Tiffany Manor at tmanor@ned-lcms.org or 309-287-0334.



CANS AND BOTTLES—BOTTLES AND CANS...

Save your returnable Bottle and Cans. Money raised will benefit Little Cherubs. A collection box is located in the storage closet towards the back of the Fellowship Hall.



WEATHER AND WORSHIP...

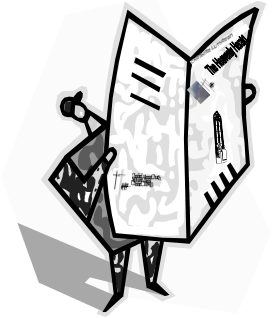
Who knows what kind of winter we will have this year! To find out when worship services have been cancelled due to weather conditions, check TV channels, WTNH channel 8 or MyTV 9, WFSB channel 3 and on the radio, WTIC 1080 AM. All these stations have websites that list weather closings too! You may also check our website for information. A mass e-mail will also be sent. If you would like to be included on our mass e-mail please let the church office know.

Stay warm!

PLEASE CONTRIBUTE TO MAKING THIS NEWSLETTER A SUCCESS!! (March 2015 Articles are Due!)

Please electronically submit ALL articles and information to Beth Soulier (soulierbeth@sbcglobal.net) by **Friday February 20th** or earlier! Place all non-electronic articles and information you would like printed into the HH in Beth's lateral file folder on the hallway table.

Thank You!



HOPE PREGNANCY CENTER...

Volunteers to deliver baby items to Hope Pregnancy Center, located next to the Library in Cheshire, are needed. If you would like to help once or twice a year, please sign up on the bulletin board.

We have re-directed the donated baby items which are collected in the bassinet outside the church office. For years we have been donating them to "Baskets of Love" where women of the Waterbury Church of Christ used them to make baskets which are distributed to new mothers in Waterbury Hospital, Bristol Hospital and New Beginnings in Waterbury. We would like to now donate these items to the **local** organization "Hope for Life", d.b.a. Hope Pregnancy Center. They are located at 110 Main Street, Cheshire in a facility provided by Christ Community Church. They will gratefully accept infant clothing and unused nursery equipment. For further information, see the poster hung above the bassinet.



THE DISCRETIONARY FUND...

This is a vehicle through which member can help those who are in need and by which member in need can find help. For assistance or to make a donation, please see Pastor G. All transactions are kept *confidential*.



NEED TO GET INFORMATION TO CERTAIN MEMBERS OF OUR CONGREGATION?

Just slip your information or a note into one of the folders on the hallway table outside the church office. Folders have been created for each of the council members, Beth Soulier (the editor of this newsletter) and a few others and placed outside the office. We have found that this is a great way to distribute information within the congregation.



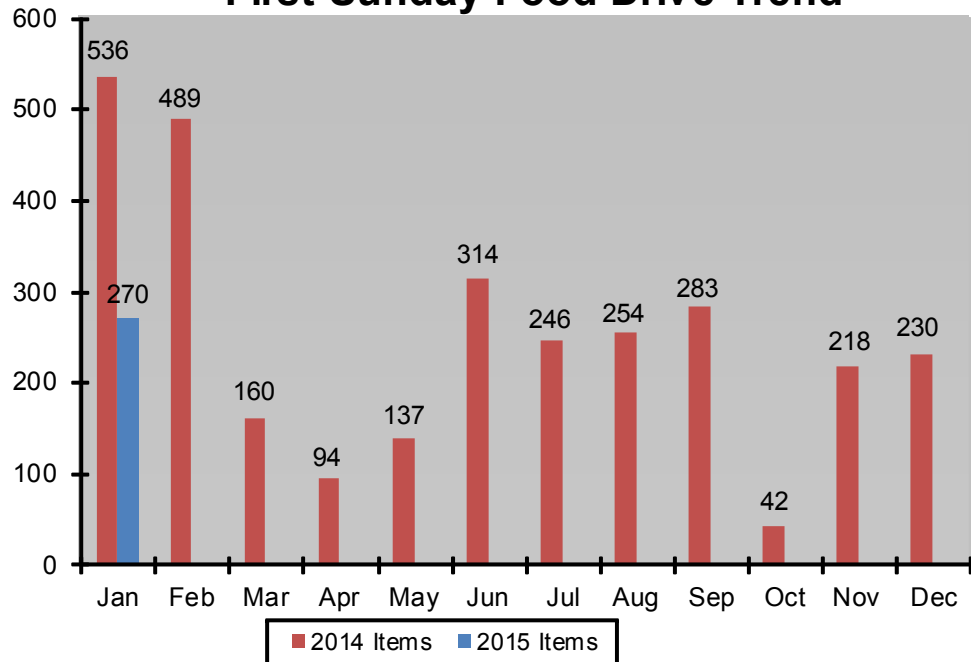


DONATE YOUR FREEBIES!

If you happen to spot an item at the grocery store selling at a special price “buy one-get one free”, purchase it and donate the free item to First Sunday Food Drive



First Sunday Food Drive Trend



“Jesus said to him, ‘Feed my lambs.’” John 21:15b

LET'S NOT FORGET THOSE LESS FORTUNATE...

Don't let our First Sunday Food Bank donations fall behind last year's totals. We are in need of volunteers for 2015. Please note that the Cheshire Community Food Pantry is open Mon., Wed., Fri. from 9:00 am until noon and Tues. & Thurs. from 3:00 pm until 6:00 pm. The sign-up sheet is posted on the bulletin board in the hallway.

Please check expiration dates. We want to insure the food we are sending is not out of date. Any and all contributions are gratefully accepted, including non-food items such as soap, tooth paste, shampoo, detergent, paper products etc.

TEACHERS NEEDED!...

In order for our CLC Sunday school to continue to operate in an effective manner, we are always looking for folks to step up and do their part. We **team-teach** at CLC which means that each person is only obligated to prepare **13 lessons** during the school year. Schedules are flexible among the members of each team. We have thorough teacher guides that take you through each lesson step-by-step. It is not necessary to have a child currently in Sunday school as demonstrated by several of our current teachers.

There are many blessings attached to being an active part of the Sunday school. You become a good Christian role-model to your children. You get to know the young people at CLC much better. And finally, it can be spiritually enriching for you personally as you revisit many of the Bible stories of your own youth.

HELP! Please prayerfully consider volunteering some of your time for this important mission of Cheshire Lutheran Church. Talk to Andy Schaefer (dcc@cheshirelutheran.org) or Carlene Myers (CarlyBaby724@aol.com) if you would like to volunteer or if you'd like to learn more about the program. We could also use folks that are willing to be on a Substitute List.



GREETING CARD FUNDRAISER!

(A project of the Thursday Ladies Group)

New cards continue to be added to the display case. All cards sell for \$1.00 and monies can be left in the yellow box attached to the rack.

Rita Stark and the Thursday Ladies presented a \$200 check(proceeds from card sales) to the Southbury Lutheran Home. The ladies thank the congregation for their generous support and hope to continue their record of giving to various church ministries.

We thank all for their support and especially thank those who leave large bills in the box.

Contact Persons; Rita Stark (272-3488) and Carolyn Bammann (272-7083).



CLC ANNUAL WOMEN'S RETREAT 2015...

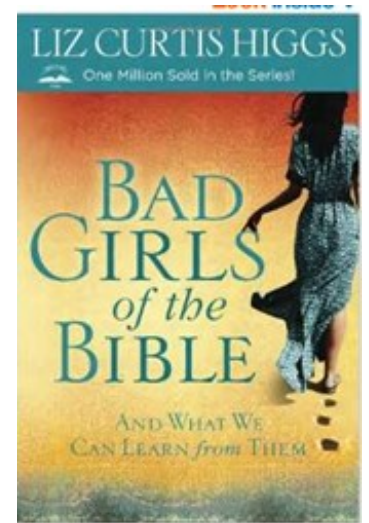
Please join the women of CLCW on Saturday May 23rd for our 8th Annual Women's Retreat. We are returning to the Guest House & Conference Center in Chester CT for a day of reflection, relaxation and socialization as we discuss "Bad Girls of the Bible" by Liz Curtis Higgs. Registration remains at \$34.00 per person including a gourmet lunch.

Ten of the Bible's best-known femme fatales parade across the pages of *Bad Girls of the Bible* with situations that sound oh-so-familiar.

Eve had food issues. **Potiphar's Wife** and **Delilah** had man trouble. **Lot's Wife** and **Michal** couldn't let go of the past, **Sapphira** couldn't let go of money, and **Jezebel** couldn't let go of anything. Yet the **Woman at the Well** had her thirst quenched at last, while **Rahab** and the **Sinful Woman** left their sordid histories behind.

Let these Bad Girls show you why studying the Bible has never been more fun!

Please save the date, details to follow. If you have any questions, please contact Vicki DePaolo 203-697-0810.



CLC HELPING HANDS...

If you are in need of help please call on our Helping Hands committee. Please call Christine Smith (203) 250-7323 and she will arrange for meals to be made and delivered to you by our committee. You can also email her at christinels@hotmail.com

Whether this need is the result of a hospital stay, a new baby arrival, or a recent loss of a loved one, we want to support you during your critical time.

If you would like to volunteer as a member of the helping hands committee by making a meal for someone who is in need, please call Christine Smith so that we may call upon you when the need for your assistance arises.

Therefore, as we have opportunity, let us do good to all people, especially to those who belong to the family of believers. -- Galatians 6:10



PLEA FOR SHIFU ...

Dear Cheshire Lutheran Family,

After some deliberation and discussion with the Social Welfare Deacon, Pastor, and our Voters, I am following their advice and writing to ask for your help. I am asking on behalf of someone important in my life, but who is not a member of our church, not related to a church member, not Lutheran or even Christian, but is a good man and could use our help.



For the past 10 years I have been taking Tai Chi from a wonderful teacher who quickly earned my respect for his art and his talent for teaching his students something that very few people in the world knew. His name is Zhang Zhaoxun. He came to the US from mainland China about 11 years ago as a martial arts scholar to share his rare form of Tai Chi with those living here. He quickly earned the respect of the Tai Chi community in Connecticut and all the masters here immediately recognized his talent.

In May this year, despite being in exceptional physical and mental condition for someone in his early 60s, he had a stroke that severely affected his right side and hospitalized him for about two months. As is common with these events, his recovery has been slow, and full recovery will still take some time. His wife works in a factory in North Haven and was able to take off work to care for him for a couple of months, but she had to return to work recently so as not to lose her job. Since Shifu Zhang (shifu means teacher) has not been able to teach, several of his students dropped out, and his income from teaching has decreased significantly. Some of his students are determined to continue with the classes, in part to keep up the practice, but also to provide him with some income in these difficult times. Shifu Zhang has no family in the US. His students have stepped up to help him in these hard times when his wife has to be at work. They have assisted with simple everyday care, physical rehabilitation and with helping him re-learn to speak English.

I have known both Shifu and his wife to be people of simple means who live very modestly and are grateful for all they get. However, their medical bills have been piling up and winter is a scary thought when it comes to expenses. I have been praying for his recovery, but I felt that I would like to do something more. As a Christian, I would like to ask you to contribute as you see fit to help Shifu Zhang and his wife with some basic financial support for the coming winter months. I will place a specially marked box on the hallway counter and you can place your donation in the box. Please make your checks payable to Cheshire Lutheran Church and write "Zhang" in the memo line, so that we will be able to write Shifu Zhang a check to help him with his financial needs. If you have any questions or suggestions you can email me at chrisandemese@sbcglobal.net, or call 203-675-7522. If you are interested in learning more about Shifu Zhang and his art please visit <http://www.zhangtaichi.com/>

Thank you in advance for your help and for everything you do.

Emese Gall

BEGINNING AND ENDING IN WORSHIP

Lent

2015



WORSHIP

STUDY

PRAYER

SERVICE

EVANGELISM

Bible Studies at CLC

SUNDAY MORNING BIBLE STUDY...

Please come to this wonderful study of Gods Word. Join us in the Library each Sunday morning at 9:10.



TUESDAY EVENING BIBLE STUDY...

Watch the Sunday Bulletin for information on the current study. Join us each Tuesday evening at 7:30 pm. The current study will resume the New Year on the 6th.

CALLING ALL MEN...

Have you been searching for an opportunity to deepen your faith in God and strengthen your relationship with fellow Christians? Join us for an hour of Bible study, fellowship and prayer once a month. We meet at 7:30am and finish promptly at 8:30am the third Thursday of every month.



BIBLE SCHOLARS...

Our CLC Bible Scholars (so-called!) continue to meet every Thursday (except the 3rd Thursday) from 8:30AM to 9:30AM here in our CLC church library.

We're studying the New Testament Book of Revelation as follows:

Date	Lecture
February	Study of <i>Mere Christianity</i> by CS Lewis

All are welcome!
Pastor Nuechterlein



THURSDAY AFTERNOON LADIES...

Attention Ladies!

Come join the "Young at Heart Group" of women who get together the last Thursday of every month at CLC, except when a special need arises like assembling the HH Newsletter! We are a "no frills" group whose mission is fellowship and service to each other and the church.

Our gatherings are alive with timely discussion and happy reflections on the members' varied and interesting backgrounds. We also put together the newsletter and sponsor the on going greeting card fund raising project.

Refreshments served (provided by members), Lunch out occasionally!

COME, JOIN US, GET INVOLVED!





NEWS FROM OUR LITTLE CHERUBS...

Season's Greetings to All. Little Cherubs have been very busy preparing the way for the Lord. They learned about Advent and have fun everyday opening up the window to see what was revealed on each day in the Advent Calendar. We made a Paper Chain with numbers 1-25. They had fun recognizing the numbers, putting the chain together and taking the links off counting down to Christmas. The children made their family Christmas Ornaments and made the wrapping paper to wrap them in. Our Little Cherubs practiced cutting and made a paper wreath. A Christmas Tree was made with all the Wreaths. Gingerbread Men and paper Angels were made and decorated out of Paper Plates. They could be placed on the top of their Christmas Tree. So many great things were made, and learned.

I am so proud of this group of children. They are kind, and loving to one another. We had a little get together on the Tuesday before Christmas. The parents were invited and were asked to bring in a dessert. Everyone had such a great time being all together.



January so far has been busy as well. We made bird feeders with bird seed and peanut butter on pine cones and have created wonderful art projects.

Check out our bulletin board in the area by the Office to see pictures of our adventures together.

Have a wonderful Month....

February is right in front of us... Great things will be shared.

Joann and Martha



CIH NEWS ...

Over the past year Cheshire Interfaith Housing (CIH) has been working together to support both financial aid and manpower to families through our Neighbors in Need Program. We have supplied or constructed a number of handicap ramps, home repairs, yard clean up, etc. These repairs have helped one of our own members of Cheshire Lutheran Church.



Bird'n Boys Band

CIH has recently been given a great opportunity to help assist a wonderful family in town that need critical home improvements. Renovations are needed to provide handicap accessibility for two recently adopted children in town with severe medical needs.

The renovations include the following: handicapped bathroom facilities, larger hall and entrance-way, and a Hoyer lift access for the shower. These renovations will cost approximately \$30,000 and **CIH needs your help** to achieve this goal.



Tropical Hot Dog Band

To help in raising funds for this renovation we will be holding a **fundraiser at the Waverly Tavern Restaurant on Friday, February 6**. We will be hosting two bands (Tropical Hot Dog Band and Bird'n Boys Band) from 7:00 p.m. to 12:30 a.m. Tickets are \$25 and we will provide appetizers, lite dessert, and coffee in addition to music and dancing. There will be a cash bar available as well as baskets to be raffled off. I hope that you will be able to join Buzz and I. Please contact me if you are interested at gancarz@cox.net or 203-272-4995.

Lastly I am looking for another person to work with our group, preferably someone with more construction skills than I have. If you are interested in joining CIH please let me know.

Linda Gancarz

SUNDAY SCHOOL FOR FEBRUARY 2015...

February 1: Jesus Heals, Prays, and Preaches

Adults often try to be self-sufficient. Admitting a weakness or need isn't seen as a valued thing to do. Adults want to be able to prove they're in control and have what it takes to succeed in life. But the reality is, we can't do it on our own!

Bible Point: Jesus cares for us.

Key Verse: Matthew 11:28



February 8: Jesus Calms a Storm

Just like Jesus' disciples who were caught in a storm on the Sea of Galilee, most people experience different kinds of life "storms" that produce fear and anxiety. But often adults are conditioned not to admit fear. Encouraging people to share their fears with one another can help them normalize this natural emotion.

Bible Point: We turn to Jesus when we're afraid

Key Verse: 1 Peter 5:7



February 15: Four Friends Help a Paralyzed Man

Adults have had a lot of time to do things they regret—so they can be pretty full of guilt. Even those who recognize God's forgiveness can still wrestle with feelings of guilt for past sins.

Bible Point: Jesus forgives us.

Key Verse: 1 John 1:9



February 22: Jesus Heals the Blind Man

Adults have no problem conceptualizing the unseen. Not being able to see God isn't an obstacle to believing in him. However, there may be other obstacles. Hard times may cause adults to wonder if God is really there. Tough questions without answers may make them question if God really knows what he's doing.

Bible Point: We have faith in Jesus.

Key Verse: Titus 3:5



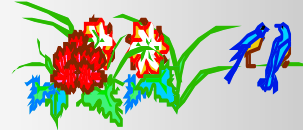
- 1 Larry Fiedler
- 5 Ashley Sinatra
- 7 Michelle Giampietro
Ray Cirmo
Meredith Richter
Aimee Shepard
- 8 Arthur Munter
Carissa Myers
- 10 Christopher Sheppard
Judi-Lynn Reidinger
- 11 Grace Carson
Kiley Soulier
- 12 Kathy Gustafson
- 13 Regina Lynch
- 15 Debra Caron
Aliza Kennelly
Ava Euen
- 16 Jim Mertz
Priscilla Mulvaney
- 17 John Bammann
- 19 Quinn Hays
- 20 Glenn Myers
- 23 Norma Baker
- 24 Jeanette Bothroyd
Connor Collins
- 25 Janice Schaff
Gloria Nuechterlein
- 26 James Donewald
- 28 Vicki DePaolo



HAPPY ANNIVERSARY

February 2015

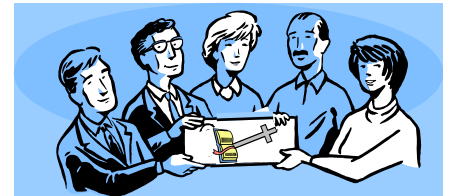
14th Joseph & DeAnn Sinatra 20 Years



2015 PLEDGE PACKAGES...

If you have not yet returned your pledge packet and for the year 2015, please do so upon your next visit to the church.

COUNCIL MEETING REMINDER...



Council will meet Tuesday February 10 at 7:00 pm .



Happy Birthday!



**Cheshire Lutheran Church
660 West Main St
Cheshire CT 06410**

