



The Heavenly Herald

660 West Main Street P.O. Box 157 Cheshire, CT 06410

(203) 272-5106 Fax (203) 272-3523

On the Web at <http://www.cheshirelutheran.org>

Email us at: office@cheshirelutheran.org



INSIDE THIS ISSUE:

Visit Our New Website	2
Daylight Savings Time Reminder	2
Visit Our New Website	2
CLC Calendar	3
March Worship Servants	4
DCE	5
Easter Breakfast	5
All Choirs Schedule	6
Financial Secretary Needs YOU	6
Lenten Soup and Salad Suppers	7
2015 Pledge Packet Reminder	7
2015 Flower Chart	7
Are You Missing Any Serving Dishes?	7
News from Our Stewardship Deacon	8
Remember our Cherished Congregants	8
Coffee Hour Help Needed	8
Thursday Ladies Donate Card	8
Proceeds to Little Cherubs	
Bottles and Cans Collections	9
Our Sincere Appreciation	9
Assistance for the Hearing	10
Columbarium at CLC	10
CLC Choir News	11
On the Bulletin Board	11
CLC Calendars for 2015	11
This Month in Our History	12
Thrivent Congregational Advocate Update	12
Worship and Weather	12
Support Hope Pregnancy Center	13
Discretionary Fund	13
CLC First Sunday Food Trend	14
Teachers Needed	14
Greeting Card Fundraiser	15
CLC Annual Women's Retreat	15
Helping Hands	15
Susquehanna University Choir	16
Bible Studies at CLC	17
Thursday Afternoon Ladies	17
News from our Little Cherubs	18
News from Our Evangelism Deacon	18
Sunday School Lessons this Month	19
March Birthdays	20
March Anniversaries	20
Voters Meeting Reminder	20

PASTOR'S MESSAGE

Holy Week...Holy Week is coming! Holy Week is coming the end of this month! Will the snow be gone by then? Will the chilling temperatures that have frozen the month of February be finished by then? Will the Final Four be over by then? Will any one remember who won what at the Academy Awards by then? Do any of these questions matter as one considers the week the church refers to as "Holy Week"? The answer is no! And yet, will people take the proper time to observe the events of just one week as a way to enrich their relationship to God?

This year Holy Week begins the last week of March and will continue into the first week of April. It will be upon us before we even know it. It is observed by the faithful every year, year in and year out. It is perhaps the most important week of the church year and members of God's family must recognize it for what it is. It is the week when Lord's Passion is remembered. It is the week when God's love for us is on display as it is displayed at no other time throughout the year. Indeed, Holy Week is the time that puts the merry in Merry Christmas. I write that because the point of the incarnation is the cross of Good Friday. As I quoted a Christmas hymn in an older newsletter article so I will by the same quote remind you this day, "Christ was born to save! Christ was born to save!" Dear friends, the saving came on a cross on the Friday of Holy Week; a "merry" result for all of us even though the means to our joy, our redemption, was anything but merry. God gave up his son, his only son whom he loved for all of us. The week reminds us how much God Almighty loves us... Holy Week!

The week begins with Passion Sunday, AKA Palm Sunday (March 29th). Some churches offer special observance each day of the week although most do not. Most churches observe three main days of the rest of the week. The days are Maundy Thursday, Good Friday and Holy Saturday, (Easter Vigil). At Cheshire Lutheran Church we observe only Thursday and Friday.

The services on those days are in the evening and begin at 7:30pm. The days call to our remembrance the final hours of Christ's life and they offer us the time to meditate upon how "while we were yet sinners, Christ died for us."

During Lent some of us have taken advantage of the midweek services offered at CLC. The services continue this month of March and if you have not attended any at this time I would encourage your attendance at the remaining services. If possible try to make the fellowship which begins at 6pm. If you cannot arrive on time, that's OK! We would be glad to see you because you are a part of our church family.

Our coming together for worship is important. Your being with fellow believers helps us to affirm a truth we share. Looking into the eyes of a fellow confessor of the faith, knowing that we own something in common so valuable that it has brought us together, is important. So, as your pastor I urge you and encourage you to join your brothers and sisters in Christ on Wednesday evenings during Lent. More than that, I commend you to remember Holy Week and to make yourself present at the evening services where God's Spirit will open your hearts and minds to the love of God, a love shown to us in the person and work of Jesus Christ.

Holy Week...I sure hope that the snow is gone, the temperatures have moderated, a team I have picked has won the final four, and we are all happy with those who received an Academy Award. Yet, so much more important than all of these things is your participation and presence at the services of Lent and Holy Week. If you make them a priority of your faith I believe you will be blessed indeed.

Peace of the Lord
Pastor Gustafson

Come Worship With Us

Sunday Worship Services:

8:00 am & 10:30 am
(Nursery Care Available - 10:30 am)

Sunday School &

Adult Bible Classes:
9:10 am

Summer Worship Service:

9:00 am
(Fathers Day to Labor Day)



The Heavenly Herald is published for members and friends of Cheshire Lutheran Church.

Church Staff

Rev. Charles Gustafson-Pastor

Carol Santoro-Office Manager

Martha Medford-Organist & Choir Director

Andrew Schaefer - Director of Christian Education

Bill Sherman-Parish President

Beth Soulier-Editor

Daylight Savings Time Begins

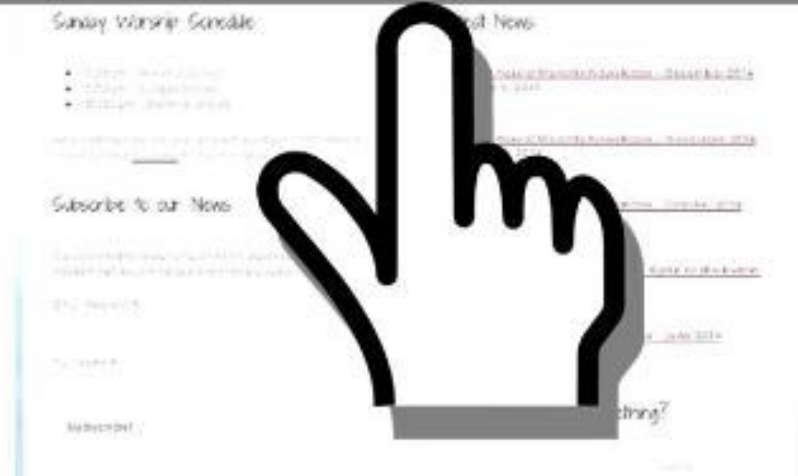
Daylight Saving Time (United States) begins **Sunday, March 8, 2015**. Move your clocks **ahead** 1 hour so you are not late for Church!

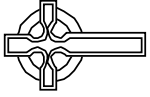
VISIT OUR NEW WEBSITE...

When you get a chance, visit our new website. Thanks to Steve Ferro's hard work our new Website was launched last month. It has a sleeker look and much easier to find what you are looking for. You can find the latest news and information, see the great pictures our Church photographer takes regularly and even view the Heavenly Herald in full color.

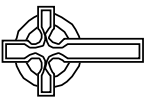


Check Out Our New Website
<http://www.cheshirelutheran.org/>





GA Galigndar



Mach

March Servants

Senior High Youth Group (CrossRoads):

March is coming! And with March comes spring! Keep your fingers crossed for some warmer weather sooner, rather than later. We will get things started off warmly with a chili cook off fundraiser and if you're planning on going to New Orleans in 2016 it is expected of you to participate in this event. The other important dates for March are listed below...

Important Dates for the Senior High Youth:

March 1st: Chili Cook Off! See below for more details...

March 8th: CrossRoads @ 7pm to 8:30pm

March 14th: CLC Youth trip to Laser Quest! See below for more details...

March 22nd: CrossRoads @ 7pm to 8:30pm

Junior High Youth Group (High Impact):

Lent is here and the means we will be meeting on Thursday's instead of Wednesday's, so, please make note of that on your calendars. Of course, you are still welcome to come on Wednesday evenings for soup, salad, and worship! Now, with March hopefully comes warmer weather but even without it we still have some important dates for you.

Important Dates for the Junior High Youth

March 5th: High Impact @ 7:10pm to 8:30pm (PB&J event!)

March 14th: CLC Youth trip to Laser Quest! See below for more details...

March 19th: High Impact @ 7:10pm to 8:30pm

Chili Cook Off

This will take place March 1st at 12pm! If you are helping with this event you should be there by 10:30am at the latest to help with set up. The event will go until 1:30pm and then clean up should last until roughly 2pm. This is a fundraising opportunity for the NYG trip in 2016 to New Orleans so it is expected of you to participate if you are planning on going on that trip.

CLC Youth Laser Quest

On March 14th, we will be gathering to go play some fun and exciting games of laser tag at Laser Quest in Newington. We will meet at the church at 1:30pm and then head to Laser Quest. We will likely return anywhere between 3:30pm and 4pm. For this event, please bring your own money to pay for your games. I believe we will have time to play 2 or 3 games, depending on time. A sign-up sheet is located in the hallway for this event.

**D
C
E**

**EASTER CONTINENTAL BREAKFAST IS BACK...**

To all members, friends and visitors: This Easter the church will hold a Continental Breakfast between the first and last service of Easter morning. We are hoping that many people will join us for breakfast and for the opportunity of fellowship the time offers. Some of the items that will be available are: Coffee, Tea, Juices, Bagels, Toast, Fruit and Cereals. We need your help with clean up as well.

If you would like to contribute a breakfast item it would be greatly appreciated. Some of the items you could bring that morning could include baked goods, fruit, fruit salad, quiches and egg casseroles. A sign-up sheet will be placed on the Bulletin Board for attendees and food items. Please let us know if you are coming and how many so we can plan.

Please consider contributing one or more of these items to help make this breakfast fellowship a success.

Questions? Contact Karen Weiland



CLC ALL CHOIRS REHEARSAL & PERFORMANCE SCHEDULE...

Date	Time	Event	Choir
March 4 - Wednesday 2nd Wednesday in Lent <i>Midweek Lenten Service</i>	6:45 PM	Rehearsal	Youth Choir
	7:30 PM	Performance	Parish Choir
	After Service	Rehearsal	Parish Choir
March 5 - Thursday	7:30 PM	Rehearsal	Bell Choir
March 8 - Sunday 3rd Sunday in Lent	10:05 AM	Rehearsal	Soloist—Bruce Emerick
	10:30 AM	Performance	Soloist—Bruce Emerick
March 11 - Wednesday 3rd Wednesday in Lent <i>Midweek Lenten Service</i>	6:30 PM	Rehearsal	Youth Choir
	7:00 PM	Rehearsal	Soloist—Eva
	7:30 PM	Performance	Soloist—Eva
	After Service	Rehearsal	Parish Choir
March 12 - Thursday	7:30 PM	Rehearsal	Bell Choir
March 15 - Sunday 4th Sunday in Lent	10:10 AM	Rehearsal	Parish Choir
	10:30 AM	Performance	Parish Choir
March 18 - Wednesday 4th Wednesday in Lent <i>Midweek Lenten Service</i>	6:45 PM	Rehearsal	Youth Choir
	7:30 PM	Performance	Parish Choir
	After Service	Rehearsal	Parish Choir
March 19 - Thursday	7:30 PM	Rehearsal	Bell Choir
March 22 - Sunday 5th Sunday in Lent	10:10 AM	Rehearsal	Youth Choir
	10:30 AM	Performance	Youth Choir
March 25 - Wednesday 5th Wednesday in Lent <i>Midweek Lenten Service</i>	6:30 PM	Rehearsal	Youth Choir
	7:00 PM	Rehearsal	Bell Choir
	7:30 PM	Performance	Bell Choir
March 26 - Thursday	7:30 PM	Rehearsal	Parish Choir
March 29 - Sunday Palm Sunday	10:10 AM	Rehearsal	Parish Choir
	10:30 AM	Performance	Sunday School and Parish Choir
April 1 - Wednesday	6:30 PM	Rehearsal	Youth Choir
	7:15 PM	Rehearsal	Bell Choir
	8:00 PM	Rehearsal	Bell Choir, Instruments & Parish Choir
April 2 - Thursday Maundy Thursday	7:00 PM	Rehearsal	Parish Choir Women
	7:30 PM	Performance	Parish Choir Women
April 3 - Friday Good Friday	7:00 PM	Rehearsal	Parish Choir
	7:30 PM	Performance	Parish Choir & Soloist
April 5 - Sunday Easter Sunday	7:20 AM	Rehearsal	Parish, Bell Choirs and Instruments
	8:00 AM	Performance	Parish, Bell Choirs and Instruments
	9:10 AM	Rehearsal	Youth Choir & Sunday School Children
	9:45 AM	Performance	Youth Choir & Sunday School Children
	11:00 AM	Performance	Parish, Bell Choirs and Instruments



FINANCIAL SECRETARY COMMITTEE NEEDS YOU...

The Financial Secretary is always in need of volunteers to aid in counting church offerings after the 9:00 AM Sunday services. If you are available 4 - 6 times per year for approximately one hour, please contact Bill Soulier!

This past Wednesday, February 25th, at 6:00 pm members and friends gathered for soup, salad, and Bible study. We invite all to join us and encourage you to invite friends or neighbors to attend our evening gatherings.

The meals are followed by Bible study and conclude with our 7:30 pm Lenten Service in the church. Our hope and desire is that you will take the time to worship and to join us during this time of Lenten meditation and discipline.

The sign-up sheet will be on the bulletin board for those who want to attend, prepare the delicious soups or help in the set up or cleanup. It is a great way to prepare for the Lenten season.

If you have any questions contact Karen Weiland at 203-250-1574



LITTLE CHERUBS CHRISTIAN PRESCHOOL 3 AND 4 YEAR OLDS OPEN HOUSE

March 7, 2015

9:00 a.m. to 12:00 p.m.

660 West Main Street, Cheshire, CT

(behind church building)

Bring your children

Enjoy: Craft Centers, Face Painting, Snacks and more

Information: 203-272-1150

NEWS FROM OUR STEWARDSHIP DEACON...



Thank you again for getting the Mission Plan off to a good start this year. Normally, my articles focus on pledging and contributions. This month I want to discuss another potential source of revenue. This one is essentially **free money**.

I am talking about **Thrivent Choice Dollars**. Many of you have accounts with Thrivent Financial. If you do, you should be eligible for Thrivent Choice Dollars. This is a program run by Thrivent whereby Thrivent members can direct where Thrivent's charitable outreach funds go. Cheshire Lutheran Church is an eligible organization to receive these funds. But CLC needs you to make sure you contact Thrivent and direct them to dedicate your 2014 Choice Dollars to CLC.

Some of you may have received a reminder notice in the mail about your dollars but some of you may not. If you did get a reminder, please return your direction to contribute as soon as possible. If you did not get anything in the mail, I ask you to please contact Thrivent and direct your dollars to be contributed to CLC. This program provides a couple thousand dollars to the Church but it could mean even more because only a percentage of members actually direct their funds. A significant percentage of members of CLC who are also Thrivent members never direct the funds at all (even to other organizations). Without the direction, your Choice Dollars will expire and not be distributed to any organization.

REMEMBER: You have to make a specific direction each year. They do not assume that your past directions are your current directions.

Per the reminder I received, instructions should be given to Thrivent by mail or phone call by March 17th in order to ensure they are processed by March 31st. Please take a few minutes to contact Thrivent and direct your Thrivent Choice Dollars to CLC. Thank you.

Sincerely,

David Veleber
Stewardship Deacon



REMEMBER OUR CHERISHED CONGREGANTS!...

There are members of our congregation who are unable to attend weekly worship. You can help them to know they are a part of our fellowship by stopping by, sending a card or making a phone call.

Edith Wnuck
c/o Highland Health Center
745 Highland Avenue
Cheshire, CT 06410

John Luchene
c/o Highland Health Center
745 Highland Avenue
Cheshire, CT 06410



SUNDAY MORNING COFFEE HOUR VOLUNTEERS NEEDED...

Sunday morning coffee hour volunteers needed! In an effort to keep this much anticipated fellowship going, we need volunteers. Can you help set up coffee a few Sunday's during the year? Purchase or make baked goods to be served? Baked goods may be brought in at any time and placed in the freezer so we have something to serve every Sunday. Kindly sign-up on the Bulletin board and if you have questions you can contact the office. Thank you!

THURSDAY LADIES DONATE CARD PROCEEDS TO OUR LITTLE CHERUBS!...

The greeting card project, initiated by Rita and husband Joe, continues to provide funds for worthwhile church benevolences. With this recent contribution, the ladies group hopes to highlight the importance of supporting our beautiful nursery school under the excellent new leadership of JoAnn and her assistant Martha Henderson. We are blessed to have these enthusiastic professionals to guide this outreach program.

We urge you to recommend this Christian centered program to friends and neighbors of 3 and 4 year olds. We also urge you to continue to support our popular greeting card project by purchasing from the wide selection of appropriate and attractive cards.

We thank you in advance for your generous participation. The Thursday Ladies meet the last Thursday of the month (weather permitting) at 1 P.M. in the library. If you are looking for fellowship with a group of ladies growing older gracefully, come and join us. Refreshments provided!

Carolyn Bammann, Chairperson



Rita Stark, sponsor of the Thursday Ladies greeting card project, presented a \$500 check to JoAnn Holstein, Director of Little Cherubs, and Pastor Gustafson.

BEGINNING AND ENDING IN WORSHIP

Lent

2015

WORSHIP

STUDY

PRAYER

SERVICE

EVANGELISM

CANS AND BOTTLES—BOTTLES AND CANS...

Save your returnable Bottle and Cans. Money raised will benefit Little Cherubs. A collection box is located in the storage closet towards the back of the Fellowship Hall.



Our Sincere Appreciation

† Many thanks to the "Thursday Afternoon Ladies" for assembling the February Heavenly Herald! HUGS!





SUNDAY WORSHIP ASSISTANCE FOR THE HEARING IMPAIRED ...

A hearing assistance system (Williams Sound Corporation) and four receivers have been donated to CLC. A receiver (hearing aid) may be obtained from any usher. Please feel free to ask for one and make sure you return to an usher at the end of the service so it can be returned to its proper storage place for use at another time.

COLUMBARIUM BEING PROPOSED AT CLC...

A Columbarium is a wall or other free standing (usually stone) structure, lined with recesses for the placement of urns that contain the cremated ashes of the deceased.



A significant number of CLC members have expressed an interest in the church exploring the possibility of constructing a columbarium on site, to allow for members and their families to have a final resting place here on CLC grounds. There would also be an opportunity for members and their families who have already lost a loved one, who is interred elsewhere, to have a memorial plaque placed on the columbarium.

The project will be self-funded, with proceeds from members and their families who choose to be a part of the project. The funds would be used to construct and maintain it. The project would not use existing CLC funds. It is expected that the cost to be interred would be similar to a burial at a local cemetery, or about \$1,000 per recess. Memorial plaques for those interred elsewhere would be half that amount.



It is envisioned that the Columbarium would be located in the area of the Reflection Garden located at the rear of our property. It is a beautiful spot and the existing landscaping allows for a natural, quiet spot for visitors to visit and meditate. Of course other locations on the property could be considered.

There are many types of columbariums. We have included one example below from a church in Southbury. The individual urns are placed in recesses inside the wall, and the plaque identifying the location of the person is installed on the top of the wall. If a columbarium were to be built here, it would be the combined vision of a planning committee that would look at all options available.

Please take some time to think about this important subject. There was an informational meeting held on Sunday January 25th at CLC. The purpose of that meeting was to explain the project in greater detail, and to entertain questions from members. The goal of the meeting was to determine if there is sufficient interest to proceed with further planning for this project. Several members have signed on to form a committee to take this to the next step which is to gather all the information and present to the Voters. If you were not able to attend that meeting, but have an interest in knowing more about a columbarium, please contact either Pat DiDomizio (203-881-8399 and jdidomzio@aol.com) or Buzz Gancarz (860-302-1643 and gancarz@cox.net) to share your thoughts.

Additionally, if you are struggling with the concept of cremation of your final remains, speak with Pastor G or Pastor N for clarification on our beliefs as Lutheran Christians.

CLC CHOIR NEWS...

All Choirs rehearse on Wednesday evenings as follows:

- 6:30 PM – Youth Choir
- 7:15 PM – Adult Bell Choir
- 8:00 PM – Parish Choir

The Parish Choir sings on the 1st, 3rd & 5th Sundays and the Youth Choir performs on the 2nd and 4th Sundays each month. Both Choirs usually sing at the 10:30 but sometimes are asked (mostly Parish) to sing at the 8:00 service as well.

The Bell Choir will perform on special occasions 5-7 times throughout the year.

Each choir is praying for new members. Please consider joining, you will be happy you did! No experience necessary!

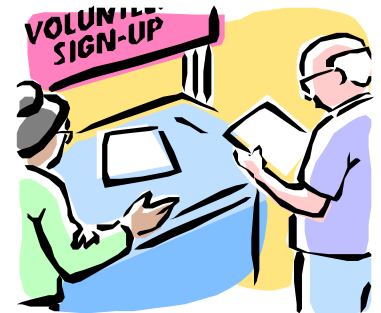


ON THE BULLETIN BOARD:

Remember to check the Bulletin Boards and/or hallway table for sign-up sheets and information about various events!

This month on the Bulletin Board:

- † CLC Little Blessings Nursery Needs Volunteers
- † Give Your Old Car A Good Home **Good News Garage** information
- † Cheshire Food Drive Volunteer info. and sign-ups
- † Hope Center 2015 volunteer sign-ups
- † 2015 Usher Schedule
- † Little Cherubs enrollment information



Others looking for help!

- † **Helping Hands** - Contact Christine Smith if you would like to be a member of the helping hands committee.
- † **All Choirs** rehearse on Wednesday evenings as follows:
 - 6:30 PM – Youth Choir
 - 7:15 PM – Adult Bell Choir
 - 8:00 PM – Parish Choir

Each choir is praying for new members. Please consider joining, you will be happy you did!

- † **Sunday Morning Coffee Hour Fellowship:** Looking for members to help out with this wonderful fellowship. Contact the office!
- † **Sunday School Teachers Needed**—Prayerfully consider serving our congregations children by volunteering to Teach them a few Sunday mornings during the year. See Carlene Myers or Andy.



ARE YOU MISSING ANY SERVING DISHES?

Please take a look on the table outside the Kitchen for dishes that you may have left behind.



Happy St. Patrick's Day



THIS MONTH IN OUR HISTORY!...

A monthly glimpse of the history of your Cheshire Lutheran Church:

March 30, 1958	Congregation chartered on Palm Sunday, with 71 communicants received as charter members
March 1960	The Rev. Darrel Geitz released to accept call to Our Savior and Messiah Lutheran Church in Evansville, Indiana
March 1979	Church Fellowship Hall and Sunday School rooms construction commenced

THRIVENT CONGREGATIONAL ADVOCATE UPDATE...



Through the Thrivent Choice Dollar Program, eligible Thrivent members are designated charitable grant funds which they can direct among thousands of nonprofit organizations, including congregations. In 2014, Cheshire Lutheran Church received \$5,550.00 in Choice Dollar allocations. A tremendous thank you goes out to all Thrivent members who generously directed their Choice Dollars to our congregation.

Thrivent members who have been designated Choice Dollars have until **March 31, 2015** to direct any remaining 2014 Choice Dollars to support organizations. After this date, any undirected Choice Dollars will expire. To direct Choice Dollars, call 1-800-THRIVENT and state "Thrivent Choice" or log on to www.thrivent.com/thriventchoice. The Choice Dollar Program will remain unchanged for 2015.



The New Haven Chapter of Thrivent and Thrivent's **Care Abounds in Communities** program will be ending June 30, 2015. In 2014 alone, \$3,100 in supplemental funding was approved under this program for various activities held at CLC. Recipients of these funds included: The Cheshire Food pantry, Church World Services, Lutheran World Relief, Lutheran Home of Southbury, Safe Haven of Greater Waterbury and Immanuel Lutheran Church Comfort Dog Ministry. There is a limited amount of funding available for Care Abounds in Communities activities through May 31, 2015.

Thrivent has introduced the concept of **Action Teams** which gives members the ability to become personally involved in meeting a need in the community. Members lead a team in a one-time fundraiser, service activity or educational event. For further details on this new program, please contact either Mark Manning (203-241-0858) or Alan Spose (203-623-1650).

Once again, thank you to all Thrivent members who participate in these programs.



WEATHER AND WORSHIP...

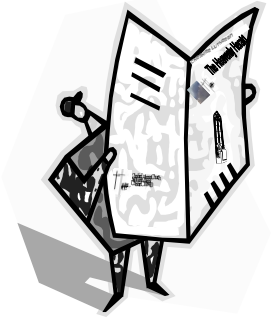
What a snowy, icy and frigid winter it has been so far! To find out when worship services have been cancelled due to weather conditions, check TV channels, WTNH channel 8 or MyTV 9, WFSB channel 3 and on the radio, WTIC 1080 AM. All these stations have websites that list weather closings too! You may also check our website for information. A mass e-mail will also be sent. If you would like to be included on our mass e-mail please let the church office know.

Stay warm!

PLEASE CONTRIBUTE TO MAKING THIS NEWSLETTER A SUCCESS!! (April 2015 Articles are Due!)

Please electronically submit ALL articles and information to Beth Soulier (souliebeth@sbcglobal.net) by **Friday March 20th** or earlier! Place all non-electronic articles and information you would like printed into the HH in Beth's lateral file folder on the hallway table.

Thank You!



HOPE PREGNANCY CENTER...

Volunteers to deliver baby items to Hope Pregnancy Center, located next to the Library in Cheshire, are needed. If you would like to help once or twice a year, please sign up on the bulletin board.

We have re-directed the donated baby items which are collected in the bassinet outside the church office. For years we have been donating them to "Baskets of Love" where women of the Waterbury Church of Christ used them to make baskets which are distributed to new mothers in Waterbury Hospital, Bristol Hospital and New Beginnings in Waterbury. We would like to now donate these items to the **local** organization "Hope for Life", d.b.a. Hope Pregnancy Center. They are located at 110 Main Street, Cheshire in a facility provided by Christ Community Church. They will gratefully accept infant clothing and unused nursery equipment. For further information, see the poster hung above the bassinet.



THE DISCRETIONARY FUND...

This is a vehicle through which member can help those who are in need and by which member in need can find help. For assistance or to make a donation, please see Pastor G. All transactions are kept *confidential*.



NEED TO GET INFORMATION TO CERTAIN MEMBERS OF OUR CONGREGATION?

Just slip your information or a note into one of the folders on the hallway table outside the church office. Folders have been created for each of the council members, Beth Soulier (the editor of this newsletter) and a few others and placed outside the office. We have found that this is a great way to distribute information within the congregation.



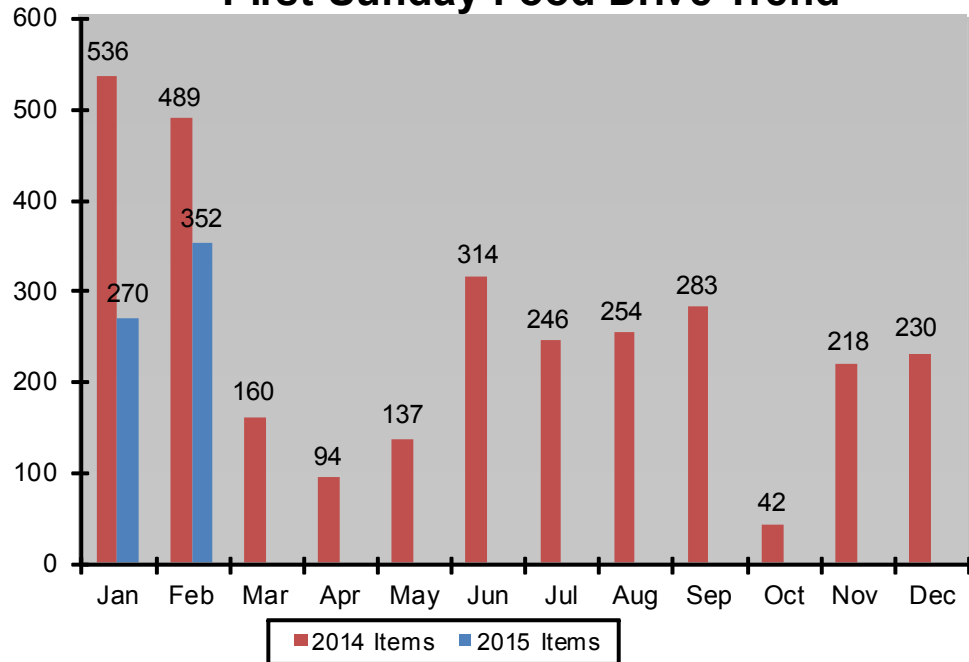


DONATE YOUR FREEBIES!

If you happen to spot an item at the grocery store selling at a special price “buy one-get one free”, purchase it and donate the free item to First Sunday Food Drive



First Sunday Food Drive Trend



“Jesus said to him, ‘Feed my lambs.’” John 21:15b

LET'S NOT FORGET THOSE LESS FORTUNATE...

Don't let our First Sunday Food Bank donations fall behind last year's totals. We are in need of volunteers for 2015. Please note that the Cheshire Community Food Pantry is open Mon., Wed., Fri. from 9:00 am until noon and Tues. & Thurs. from 3:00 pm until 6:00 pm. The sign-up sheet is posted on the bulletin board in the hallway.

Please check expiration dates. We want to insure the food we are sending is not out of date. Any and all contributions are gratefully accepted, including non-food items such as soap, tooth paste, shampoo, detergent, paper products etc.

TEACHERS NEEDED!...

In order for our CLC Sunday school to continue to operate in an effective manner, we are always looking for folks to step up and do their part. We **team-teach** at CLC which means that each person is only obligated to prepare **13 lessons** during the school year. Schedules are flexible among the members of each team. We have thorough teacher guides that take you through each lesson step-by-step. It is not necessary to have a child currently in Sunday school as demonstrated by several of our current teachers.

There are many blessings attached to being an active part of the Sunday school. You become a good Christian role-model to your children. You get to know the young people at CLC much better. And finally, it can be spiritually enriching for you personally as you revisit many of the Bible stories of your own youth.

HELP! Please prayerfully consider volunteering some of your time for this important mission of Cheshire Lutheran Church. Talk to Andy Schaefer (dcc@cheshirelutheran.org) or Carlene Myers (CarlyBaby724@aol.com) if you would like to volunteer or if you'd like to learn more about the program. We could also use folks that are willing to be on a Substitute List.



GREETING CARD FUNDRAISER!

(A project of the Thursday Ladies Group)

New cards continue to be added to the display case. All cards sell for \$1.00 and monies can be left in the yellow box attached to the rack.

Rita Stark and the Thursday Ladies presented a \$200 check(proceeds from card sales) to the Southbury Lutheran Home. The ladies thank the congregation for their generous support and hope to continue their record of giving to various church ministries.

We thank all for their support and especially thank those who leave large bills in the box.

Contact Persons; Rita Stark (272-3488) and Carolyn Bammann (272-7083).



CLC ANNUAL WOMEN'S RETREAT 2015...

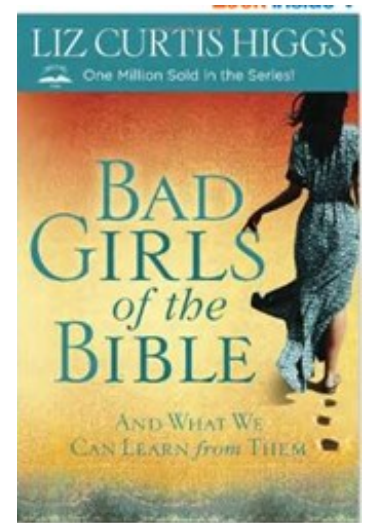
Please join the women of CLCW on Saturday May 23rd for our 8th Annual Women's Retreat. We are returning to the Guest House & Conference Center in Chester CT for a day of reflection, relaxation and socialization as we discuss "Bad Girls of the Bible" by Liz Curtis Higgs. Registration remains at \$34.00 per person including a gourmet lunch.

Ten of the Bible's best-known femme fatales parade across the pages of *Bad Girls of the Bible* with situations that sound oh-so-familiar.

Eve had food issues. **Potiphar's Wife** and **Delilah** had man trouble. **Lot's Wife** and **Michal** couldn't let go of the past, **Sapphira** couldn't let go of money, and **Jezebel** couldn't let go of anything. Yet the **Woman at the Well** had her thirst quenched at last, while **Rahab** and the **Sinful Woman** left their sordid histories behind.

Let these Bad Girls show you why studying the Bible has never been more fun!

Please save the date, details to follow. If you have any questions, please contact Vicki DePaolo 203-697-0810.



CLC HELPING HANDS...

If you are in need of help please call on our Helping Hands committee. Please call Christine Smith (203) 250-7323 and she will arrange for meals to be made and delivered to you by our committee. You can also email her at christinels@hotmail.com

Whether this need is the result of a hospital stay, a new baby arrival, or a recent loss of a loved one, we want to support you during your critical time.

If you would like to volunteer as a member of the helping hands committee by making a meal for someone who is in need, please call Christine Smith so that we may call upon you when the need for your assistance arises.

Therefore, as we have opportunity, let us do good to all people, especially to those who belong to the family of believers. -- Galatians 6:10



SUSQUEHANNA UNIVERSITY CHOIR TO SING AT CHESHIRE LUTHERAN CHURCH...

The Susquehanna University Choir will sing a concert at Cheshire Lutheran Church 660 West Main St., as an extension of their spring tour on Friday April 10, 2015 at 7:30pm. This ensemble of gifted musicians, represent the best of students from the Lutheran Liberal Arts University in Selinsgrove, Pennsylvania. The choir, conducted by Dr. Julia Brasher Thorn who is the Director of Choral Activities, and Cyril Stretansky Distinguished Chair in Choral Music, is looking forward to performing their music for an audience of choral music enthusiasts.

There will be a tremendous variety of musical style represented on the program, which is titled *Fill My Life With Spring*. Beloved composers, Bach and Mendelssohn, will be complimented by music of composers that are actively writing today. The audience will be treated to folk songs, spirituals, hymn arrangements and even a popular tune or two that may be new to the listener.

In addition to the University Choir, the SU Chamber Singers will perform a segment of the concert. Chamber Singers consist of eighteen musicians that are a subset of the University Choir and perform music appropriate to the small ensemble, often without a conductor. This versatile group of singers will be performing music of living composers but in every imaginable style.

"I have so enjoyed my work with the students of the Choir throughout my three years at SU. They are an incredible group of young musicians that are dedicated to learning to sing to the best of their abilities. They are bright individuals who bring to the ensemble a sense of pride in belonging to this musical organization. Their love of singing is evident in every rehearsal as they have the opportunity to share through choral music something far greater than they could do as individuals. As the conductor I am happy to be a part of the very special musical community that is Susquehanna, states Dr. Thorn. "I am constantly reminded of the joy we bring to our audiences and each other in making music together, says Thorn, and I hope that many will be a part of this event."

In addition to the concert at Cheshire Lutheran the SU Choir will be singing at area high schools along the way and are invited performers at the Eastern Division Conference of the National Association for Music Education on April 11th in Providence, Rhode Island.



Bible Studies at CLC

SUNDAY MORNING BIBLE STUDY...

Please come to this wonderful study of Gods Word. Join us in the Library each Sunday morning at 9:10.



TUESDAY EVENING BIBLE STUDY...

Watch the Sunday Bulletin for information on the current study. Join us each Tuesday evening at 7:30 pm. The current study will resume the New Year on the 6th.

CALLING ALL MEN...

Have you been searching for an opportunity to deepen your faith in God and strengthen your relationship with fellow Christians? Join us for an hour of Bible study, fellowship and prayer once a month. We meet at 7:30am and finish promptly at 8:30am the third Thursday of every month.



BIBLE SCHOLARS...

Our CLC Bible Scholars (so-called!) continue to meet every Thursday (except the 3rd Thursday) from 8:30AM to 9:30AM here in our CLC church library.

We'll be continuing our DVD Study of the Book of Revelation, with Dr Craig Koester, professor at Luther Seminary in St Paul, MN

All are welcome!
Pastor Nuechterlein



THURSDAY AFTERNOON LADIES...

Attention Ladies!

Come join the "Young at Heart Group" of women who get together the last Thursday of every month at CLC, except when a special need arises like assembling the HH Newsletter! We are a "no frills" group whose mission is fellowship and service to each other and the church.

Our gatherings are alive with timely discussion and happy reflections on the members' varied and interesting backgrounds. We also put together the newsletter and sponsor the on going greeting card fund raising project.

Refreshments served (provided by members), Lunch out occasionally!

COME, JOIN US, GET INVOLVED!



NEWS FROM OUR LITTLE CHERUBS...

Hello to all and God Bless,



For starters I want to Thank All who have been bringing in Bottles for our Bottle Drive. The money raised so far is going towards advertising.

Little Cherubs received \$500.00 from the money raised by the Thursday Ladies through the selling of greeting cards. We are so Thankful for that. It has gone towards supplies...

Little Cherubs is busy this month. The first Tuesday of March we will be celebrating Dr. Seuss's birthday. Green Eggs and Ham will be part of our Snack Menu. Yummy! Dr. Friel our Nurse Consultant will be visiting our children to talk about proper care for your teeth. Thursday, March 12, 2014 is Portrait Day. We look forward to all these events. Now in terms of curriculum - Ten Men and Leprosy, Mary and Martha, Jesus Feeds 5,000 and Jesus Enters Jerusalem. We will be making St. Patrick crafts. Welcoming Spring Projects and preparing the way of the Lord. So as you see we have a wonderful month.

We will be having OPEN HOUSE on March 7th from 9-12. Please stop by and say Hi.

God Bless to all,

Joann and Martha



NEWS FROM OUR EVANGELISM DEACON...



A recent poll of Connecticut residents found that only 25% of residents attend religious services every week. This is one of the lowest rates in the nation. It is even possible that the 25% figure is inflated. I realize that the survey includes all religions and I am sure that Cheshire Lutheran has more than 25% of our congregation attending church on a weekly basis. This poll also points out that over 50% of Connecticut residents attend services either seldom or never. I think that a part of the problem might be that we have become complacent as a society regarding the importance of God in our lives.

It is a normal reaction that we turn to God in a time of need. After the turmoil of 9/11, it was no surprise that church attendance increased dramatically. It is our job as Christians to encourage people to rely on God to help them every day. In good or difficult times, the need for faith in God is essential. Jesus came to our troubled world over 2000 years ago. We needed his message of hope and salvation then and we still need it today. Through our words and actions we can be ambassadors of Christ to a world that needs his love.

John Balash
Evangelism Deacon

SUNDAY SCHOOL FOR MARCH 2015...

March 1: Jesus Teaches About Commitment

Most adults have been surviving on their own for quite some time. They're often feeling very confident in their ability to handle life, because they've had to do so ever since they became adults. Consequently, following Jesus might not feel necessary. After all, if they've got their lives together, why would they need to follow Jesus? As you lead this lesson, help people see the benefits and joys of following Jesus. But also help them see the challenges so that they can truly commit to following Jesus, knowing what it costs.

Bible Point: Commit to follow Jesus.

Key Verse: Romans 1:16

March 8: Jesus Clears Merchants from the Temple

A variety of things compete for adults' attention on Sunday. Getting their kids to Sunday school. Seeing friends. Making sure they sit in the right seats. Staying awake. Fighting preoccupation with other worries. As you lead this study, remember that participants might understand what worship is, but they may need help keeping their focus on God. Help them understand what constitutes genuine worship. Your efforts will help adults enjoy a richer relationship with God.

Bible Point: God wants sincere worship.

Key Verse: Psalm 95:6

March 15: Jesus Explains Why God Sent Him

In the midst of modern complex issues that surround the Bible, adults may need to be reminded about its simple message. While God's coming to earth is not a simple matter, this message is clear: God sent his Son to die for us. Adults can often get caught up in the gray areas of Scripture, sometimes to the extent that those areas become as important as this black and white area. Help them to focus on Jesus' invitation to them and on how they can respond.

Bible Point: Jesus came to save us.

Key Verse: John 3:16

March 22: Jesus Notices a Widows Giving

Regardless of our yearly income, we all have something we can give to God. However, many adults don't understand what they can give besides money. As you lead this lesson, help adults understand the variety of things they can give to God. Help them see that giving of their time and abilities is just as important as giving of their wealth. Help them see that giving money without a sacrificial heart isn't truly giving the way God wants.

Bible Point: Give cheerfully to God.

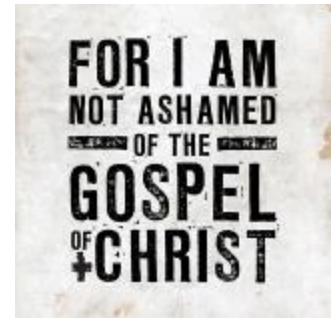
Key Verse: 2 Corinthians 9:7

March 29: People Rejoice as Jesus Enters Jerusalem

Most of the adults in your group are likely Christians. But they may not understand what it means for Jesus to truly reign as king of their lives. Like the crowd on Palm Sunday, their version of Jesus as king might be more focused on what he can do for them than on what they can do for him.

Bible Point: Jesus is our king.

Key Verse: Philippians 2:10-11



HAPPY ANNIVERSARY

March 2015



3rd	Al & Dot Manke	64 Years
5th	John & Carolyn Bammann	55 Years
19th	Paul & Trish Greenhalgh	32 Years
20th	Joe & Joann Holstein	21 Years
21st	Philip & Leigh Giampietro	34 Years



Please join us for worship on Wednesday evenings *starting February 25, 2015* at 7:30 during Lent.

Also, before the Service each week at 6:00 PM, join us for a very special Bible Study. During the Bible Study we share a wonderful soup and salad dinner.

VOTERS MEETING REMINDER

Mark your calendars, Voters will meet on Monday, March 16 at 7:00 p.m.

BIRTHDAYS

1 st	Beth Carlson
	Jason Schaff
3 rd	David Schrumm
4 th	Herman Asmus
	Dylan Neff
	Priscilla Troemel
5 th	Julianna Ball
7 th	Mark Sims
8 th	Kinsley Clark
9 th	Raymond Verner
	Melissa Veleber
10 th	Eva Schrumm
	Hannah Kjeldsen
	Conner DeLaubell
11 th	Cailynn Harding
12 th	Luke Hays
13 th	Martha Medford
14 th	John McBain
16 th	Ethel Daly
	Phil Giampietro
	Julia Schaff
18 th	Frances Davis
	Robert Davis
	William Pinto
19 th	Laura Gustafson
21 st	Carl Bernhardt
22 nd	Walter Gancarz
23 rd	Robert Lamb
24 th	Sandra Gayda
26 th	Guy Mason
	Mary Lou Aston
28 th	Alex Nizich
30 th	Rita Stark



Cheshire Lutheran Church
660 West Main St
Cheshire CT 06410

