

# The Heavenly Herald

660 West Main Street P.O. Box 157 Cheshire, CT 06410

( 203 ) 272-5106 Fax ( 203 ) 272-3523

On the Web at <http://www.cheshirelutheran.org>

Email us at: [office@cheshirelutheran.org](mailto:office@cheshirelutheran.org)

**INSIDE THIS ISSUE:**

Congregational Call Member Survey Reminder	2
May Calendar	3
Worship Servants for May	4
Sunday School for April	5
All Choirs Schedule	6
VBS News	6
Discounts for Shopping at Patrick Baker and Sons	6
News from our Little Cherubs	7
Sunday Morning Greeters Needed	7
House And Grounds Clean-Up Memories	7
First Sunday Food Drive Trend	8
CLC Choir News	8
Pastors Pilgrims Trip News	8
Hark The Herald—Adult Version	9
Hark The Herald—Youth Version 1	10
Hark The Herald—Youth Version 2	11
Church Picnic Delay—September	12
Congratulations to Our Confirmants	12
Baptism at CLC in April	12
Sunday Service Reminder	12
This Month in Our History	12
News From Our Evangelism Deacon	13
CLC Flower Chart	13
Mothers Day is Blanket Sunday	13
Greeting Card Fundraiser	13
News From Our Stewardship Deacon	14
Bottles and Cans for Little Cherubs	15
Our Sincere Appreciation	16
On the Bulletin Board	16
Meet our Missionaries	17
CLC Annual Women's Retreat	18
Support Hope Pregnancy Center	18
CLC Spirit Season Begins	18
Little Cherubs Registration—Open	18
Financial Secretary Needs YOU	19
Assistance for the Hearing	19
NEW on our Website	19
Easter 2017 Memories	20
News-Update from the Call Committee	21
Thank You from The Troops	22
Annual Troop Collection	23
Helping Hands	23
Columbarium Memorial News	24
CLC Music Offering	24
Bible Studies at CLC	25
May Birthdays	26
May Anniversaries	26
Voters Meeting Reminder	26

**PASTOR'S MESSAGE**

As I started to pack the books I would take with me off of the shelves in my office, I held one in my hand and took pause at how much I have learned over my many years of ministry. I began to realize that the road has been a long one and a rich one, an experience not many have traveled when you think about all the people in the community, and the state, and the nation and then the world. All of us surely have a Christian vocation that was given to us when God's Spirit interrupted our lives to bring us his grace and new life through the waters of baptism. However, not all of us have been called to be "ordained servants of his Word." It is a very special calling that those who bear it are very well aware.

The call takes us into the lives of many people, over many years. It takes us into homes where great joy is to be found and where deep sorrow can be experienced. It takes us to bedsides where death might be faced and where births are to be celebrated. It takes us to community action where the hungry are fed, the marginalized are recognized and visions of justice are pursued. It takes us to the gathering of God's people where God's word is proclaimed, the blessed sacraments are offered, and praise is given to God for the mercy, wonder and love he has shown the world through his Son, Jesus Christ, our Lord. The call is one that cannot end because it is life changing as its very nature causes the individual to share in the personal lives of so many, many people under his (her) care and keeping.

Those who have been given this call are truly known as the "under shepherds" of the Good Shepherd. Ours is to feed Christ's lambs, tend his sheep, feed his sheep, (John 21:15-17). I have been privileged to carry on such a work for so many, many years. I have been blessed to share the Good News of Christ Jesus always hoping that the Holy Spirit would open hearts and doors of those to whom such a ministry has been shared.

In partnership with me has been one not called

into this vocation, but brought into it never the less. She has been by my side always listening, observing and responding to the various needs that arise within a congregation and its surrounding community. My wife Kathy has helped in so many ways from dealing with questions medical to assisting at weddings and funerals. Her ministry to the various churches has been as long as mine, but only recognized on occasion. She is integral to the many happenings that go on behind the scenes and has been a "silent" partner in the many things that have made for a fruitful and blessed ministry. I am and have always been thankful for her care and concern for the work I have done and for the ministry we have shared.



I also must admit that ministry is not the work of one person, but it is the result of many, many individuals who come forward to make sure the Gospel is shared. This reality has been something I have been well aware of my entire ministry. I have worked side by side with hundreds of people who have wanted to share the love of God with the people of our world. Every church I have been a part of has taken very seriously the call of Christ to go into the world and to share the Gospel. Sometimes the directive was fulfilled locally and at other times nationally or internationally. People within the church from so many different backgrounds of human community have come forward to be of assistance in the goal of kingdom work. I cannot name them all, but I am thankful for all of them. It has been what ministry is to be, a shared common endeavor for the sake of Jesus, our Lord.

Now my leadership in this work is taking a backseat so that I might go in a different direction from what I have been used to. It is not a joke that I plan to go fishing, although

*(Continued on page 5)*

## **COME WORSHIP WITH US**

**Sunday Worship Services:**  
8:00 am & 10:30 am  
( Nursery Care Available - 10:30  
am )

**Sunday School  
&  
Adult Bible Classes:**  
9:10 am

**Summer Worship Service:**  
9:00 am  
( Fathers Day to Labor  
Day )



## **NEWS FROM THE PRESIDENT**

### *AND THE CHURCH COUNCIL*

Greetings All,

As I sit here writing this month's article, it is still almost inconceivable to me that our Pastor will be retiring after just two more Sunday services, with his final service being May 7<sup>th</sup>. My family and I have been a part of the larger CLC family for nearly 19 years and Pastor Gustafson has been the spiritual head of that family this entire time and longer, having served as CLC's Pastor for the past 22 years.

Pastor Gustafson presided over the weddings of our children, baptized our grandchildren and confirmed Kyong and I and both Lutherans and members of this fine congregation. Pastor – you will always have a special place in the hearts of the Mann Family and we will miss you. We wish you and Kathy nothing but the best as you enter the next phase of your lives! God Speed!!

Our Call Committee continues their important work and is nearing the next phase of the process. Surveys are due May 8<sup>th</sup> and it is very important that we receive as many responses as possible. This will help them create an accurate profile of our congregation and the direction we wish to take on into the future.

Our Call Committee continues their important work and is nearing the next phase of the process. Surveys are due May 8<sup>th</sup> and it is very important that we receive as many responses as possible. This will help them create an accurate profile of our congregation and the direction we wish to take on into the future.

As always, Pastor Gustafson, Martha, our Choirs and musicians did a masterful job of planning and providing beautiful and moving Holy Week services, culminating in our well attended Easter services. Between services we were once again blessed with a delicious Easter brunch – Thank you to Karen Weiland, the Drusts and all the volunteers that pitched in to make this such a nice family event.

Thank you to all that volunteers that helped with both the inside and outside cleanup of the church and grounds – great job!

Special thanks to Tim Weiland for always being there – as in EVERYWHERE – with his camera and impressive photography skills. Tim tries to avoid the spotlight, but we are truly blessed to have someone so talented, creative and willing to serve in the manner he does – Thank you Tim!

Thank you to all the Voters that attended our last meeting on April 3<sup>rd</sup>. We had a lot to accomplish, but were able to work our way through it in a quick and efficient manner.

Please continue to keep Pastor Nuechterlein and Gloria in your prayers as Pastor continues on his road to recovery. We wish him a full and speedy recovery!

Our next Council meeting will be Tuesday, May 9<sup>th</sup> at 7:00pm, in the CLC library.

Yours in Christ,

Jeffrey A. Mann  
Parish President, CLC

*The Heavenly Herald  
is published for members and  
friends of Cheshire Lutheran  
Church.*

### Church Staff

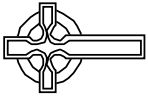
*Rev. Charles Gustafson-Pastor*

*Carol Santoro-Office Manager*

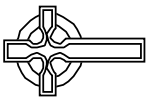
*Martha Medford-Organist &  
Choir Director*

*Jeff Mann-Parish President*

*Beth Soulier-Editor*



# GALENDAR



May

# May Servants

*(Continued from page 1)*

it seems to me that I have been fishing for quite some time in a pond that is our world. I plan on a time of refreshment so that new energy may be gained and I can meet the challenges that will arise as a new chapter of my life unfolds. I am not sure where this new direction will take me, but I am open to the many avenues yet to be revealed. I hope to be able to do many things that I did not have the time to do before due to the nature of my profession and I look forward to the opportunities that the future will open to me.

I believe that I will continue to learn about ministry as it is presented from a different perspective. I suspect it will be major change for me as I will take my place among the people of the church as parishioner rather than leader. I hope that I will be a gracious worshipper and member as were so many in the churches I shepherded. I will look forward to working with fellow parishioners as we seek new avenues to share an old message; the message of God's love in Christ Jesus. If reflecting upon my years as a shepherd presents any type of barometer of such work then I can be certain my hands and life will be full.



It has never been easy for me to say good-bye to the people and things I have loved. It is especially difficult when the time has spanned quite some time. Yet I think it appropriate for me to end this last pastor's message with the words once penned by St. Paul. "I thank God in all my remembrance of you, always in every prayer of mine for you all making my prayer with joy, thankful for your partnership in the gospel from the first day until now. And I am sure that he who began a good work in you will bring it to completion at the day of Jesus Christ." (Philippians 1:3-6)

Until that day, the peace of the Lord be with you!

Pastor Gustafson

## SUNDAY SCHOOL FOR APRIL 2017...

Congratulations on a Job well done on Easter morning to our CLC's Sunday school children! Please do let us keep the momentum going! Still have much to learn. Note the following Sunday School Schedule:

- ✠ **May 7<sup>th</sup>** – Sunday School starts after the 9:00 AM Service at 10:15 AM
- ✠ **June 11<sup>th</sup>** - the last day of Sunday school until September

Once again this will be a challenge with the warm weather & sports activities on Sunday mornings! However, learning to Trust & Comprehend the Strength the name of Jesus carries and learn how powerful from the lessons in the Bible is just as (if not more) important then sporting events.

New Easter Outfit \$50.00; Going out to Easter Brunch \$39.99; Learning of the Unconditional LOVE & Eternal Life with Jesus? PRICELESS!!!!

BRAVO & Thank You!!!

Yours in Christ,  
Carlene Myers



## CLC ALL CHOIRS REHEARSAL & PERFORMANCE SCHEDULE...

Date	Time	Activity	Choir
May 3 - Wednesday	7:15 PM	Rehearsal	Bell Choir
	8:00 PM	Rehearsal	Parish Choir
May 7 - Sunday <i>Pastors Last Sunday</i>	8:30 AM	Rehearsal	Parish Choir
	9:00 AM	Performance	Parish Choir
May 10 - Wednesday	7:15 PM	Rehearsal	Bell Choir
	8:00 PM	Rehearsal	Parish Choir
May 14 - Sunday <i>Mother's Day</i>	8:30 AM	Rehearsal	Sunday School
	9:00 AM	Performance	Sunday School
May 17 - Wednesday	7:15 PM	Rehearsal	Bell Choir
	8:00 PM	Rehearsal	Parish Choir
May 21 - Sunday	8:30 AM	Rehearsal	Bell Choir
	9:00 AM	Performance	Bell Choir
May 24 - Wednesday	6:30 PM	<b>Picnic</b>	All Choirs
May 28 - Sunday	8:30 AM	Rehearsal	Parish Choir
	9:00 AM	Performance	Parish Choir

### THE BEST WEEK OF THE SUMMER!...

- \*New friends \*Amazing experiments\* Creative games \*Lip-smacking snacks
- \*Surprising adventures \*Incredible music

## CLC's Vacation Bible School

Pre-School through grade 5

9:00 am to Noon, July 17<sup>th</sup> – 21<sup>st</sup>,

Registration forms are available on the hallway counter or by visiting our web-site.  
Call 203-272-5106 for further details.



### SHOP AT PATRIC BAKER & SONS...CLC GETS 10%...

Patrick Baker & Son's, 1650 West Street, Southington, has initiated a program that can earn cash rebates for CLC. 10% of purchases will be deposited in the church's account. Simply give them Cheshire Lutheran's name when shopping in the store. If purchasing through the web, visit [www.Churchgoods.com](http://www.Churchgoods.com); when checking out, select CLC as your church and place the provided church ID# in the church code box.



## NEWS FROM OUR LITTLE CHERUBS...

During April, we learned about the days of Holy Week leading up to Easter. We learned all about Easter and did activities for Palm Sunday and Easter. We made paper palms, Easter Lilies and made resurrection bread as a snack. We colored Easter eggs and talked about colors and had an egg hunt.

We enjoyed a week of vacation!!!

We continued learning letters, sounds and numbers. We planted pansies in the Bell Garden, check the bulbs we planted in the Fall by the Reflection Garden. We did some planting experiments using a sweet potato, regular potato, carrot tops and a variety of seeds. We are waiting to see how they grow. Also, our caterpillars arrived so we can watch as they develop and turn into Painted Lady Butterflies. We talked about Earth Day and made a Cherry Blossom Tree. We also learned about Arbor Day.

The librarian came in on the 24th, the children love when Miss Kim visits.

It was a very busy month.

Be Blessed,  
Joann and Martha



## SUNDAY MORNING GREETERS NEEDED...

Greeters are needed prior to the start of both of our services. Please sign up on the bulletin board indicating which Sunday (s) you are available.



## NEWS FROM OUR HOUSE AND GROUNDS DEACON...

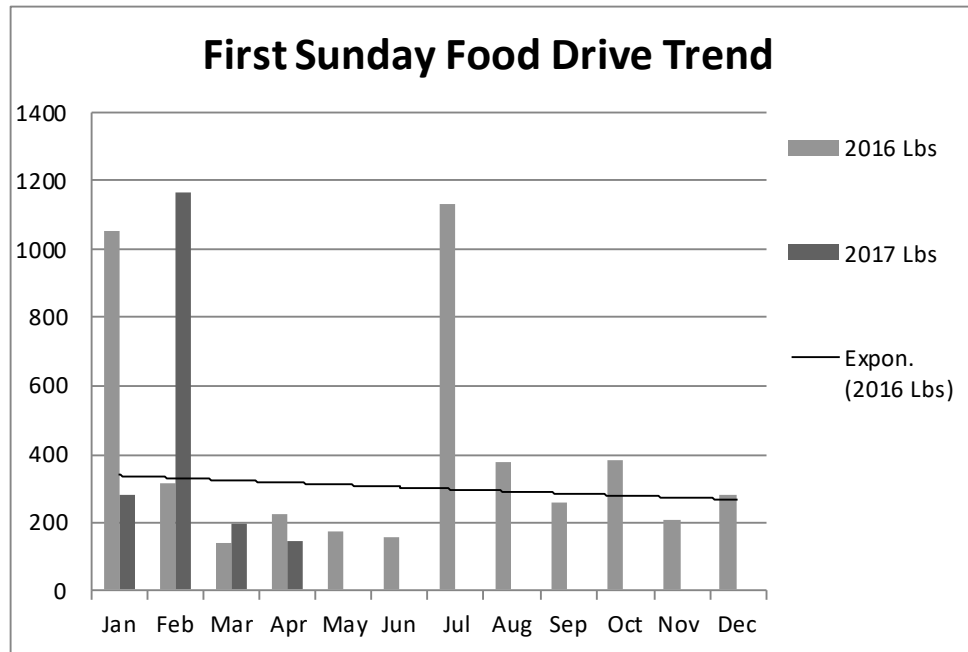
### THANK YOU TO THE INDOOR AND OUTDOOR CREWS...





**DONATE YOUR FREEBIES!**

If you happen to spot an item at the grocery store selling at a special price “buy one-get one free”, purchase it and donate the free item to First Sunday Food Drive



“Jesus said to him, ‘Feed my lambs.’” John 21:15b

**LET'S NOT FORGET THOSE LESS FORTUNATE...**

Don't let our First Sunday Food Bank donations fall behind last year's totals. Please note that the Cheshire Community Food Pantry is open Mon., Wed., Fri. from 9:00 am until noon and Tues. & Thurs. from 3:00 pm until 6:00 pm. The sign-up sheet is posted on the bulletin board in the hallway.

Please check expiration dates. We want to insure the food we are sending is not out of date. Any and all contributions are gratefully accepted, including non-food items such as soap, tooth paste, shampoo, detergent, paper products etc.



**CLC CHOIR NEWS...**

All our choirs are planning their last performances before they take a break for the Summer. They are also planning their year end All Choirs Picnic. This year the Picnic will be held at Church on Wednesday May 24th at 6:30. All Choir members are invited to bring their families and also a food item to share. See Martha for Sign-Up sheets in the coming weeks.

Look forward to seeing you there.



**2018 PASTOR'S PILGRIMS JOURNEY TO SCANDINAVIA...**

A “TRAVEL EVENING” with Pastor Greg Wismar will be held at the Lutheran Church of the Good Shepherd, 2 Colonial Road (at Rte 37) in New Fairfield on Friday, May 5 at 7:30 p.m. to introduce the 2018 Pastor's Pilgrims Journey to Scandinavia. Copies of the trip brochure are located on the hallway counter.



LET'S SEE HOW YOU DO!

MAY 2017

Sub-

A. Verses of the Bible:

Choose from these words to complete the Bible verses below:

PATIENT PEACE PERISH PROSPER PROUD PURPOSE

1. John 3:16

For God so loved the world that he gave his one and only Son, that whoever believes in him shall not p\_\_\_\_\_ but have eternal life.

2. Romans 8:28

And we know that in all things God works for the good of those who love him, who have been called according to his p\_\_\_\_\_.

3. 1 Corinthians 13:4

Love is p\_\_\_\_\_, love is kind. It does not envy, it does not boast, it is not p\_\_\_\_\_.

4. Jeremiah 29:11

For I know the plans I have for you," declares the LORD, "plans to p\_\_\_\_\_ you and not to harm you, plans to give you hope and a future.

5. Galatians 5:22-23

But the fruit of the Spirit is love, joy, p\_\_\_\_\_, forbearance, kindness, goodness, faithfulness, gentleness and self-control. Against such things there is no law.

B. Write the name of the Saint in the blanks below by how they were

**martvred:**

PAUL	PETER	STEPHEN	TIMOTHY
------	-------	---------	---------

1. According to rich tradition, \_\_\_\_\_ was crucified on the Vatican Hill upside down because he declared himself unworthy to die in the same manner as the Lord. He was then buried in Rome near the Vatican on Vatican Hill.
2. In 67 AD, \_\_\_\_\_ was arrested in Rome for a second time and this time he was beheaded under the Emperor Nero.
3. According to tradition, \_\_\_\_\_ went to Ephesus, became its first bishop, and was stoned to death there when he opposed the pagan festival of Katagogian in honor of Diana.
4. As \_\_\_\_\_ was being brutally stoned, he spoke his last words, "Lord Jesus, receive my spirit. Lord, do not hold this sin

*See Answers on Page 14*

*Junior Version - 1!*

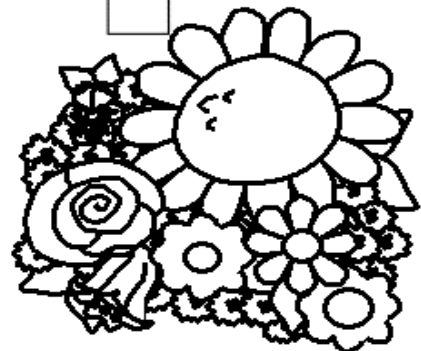
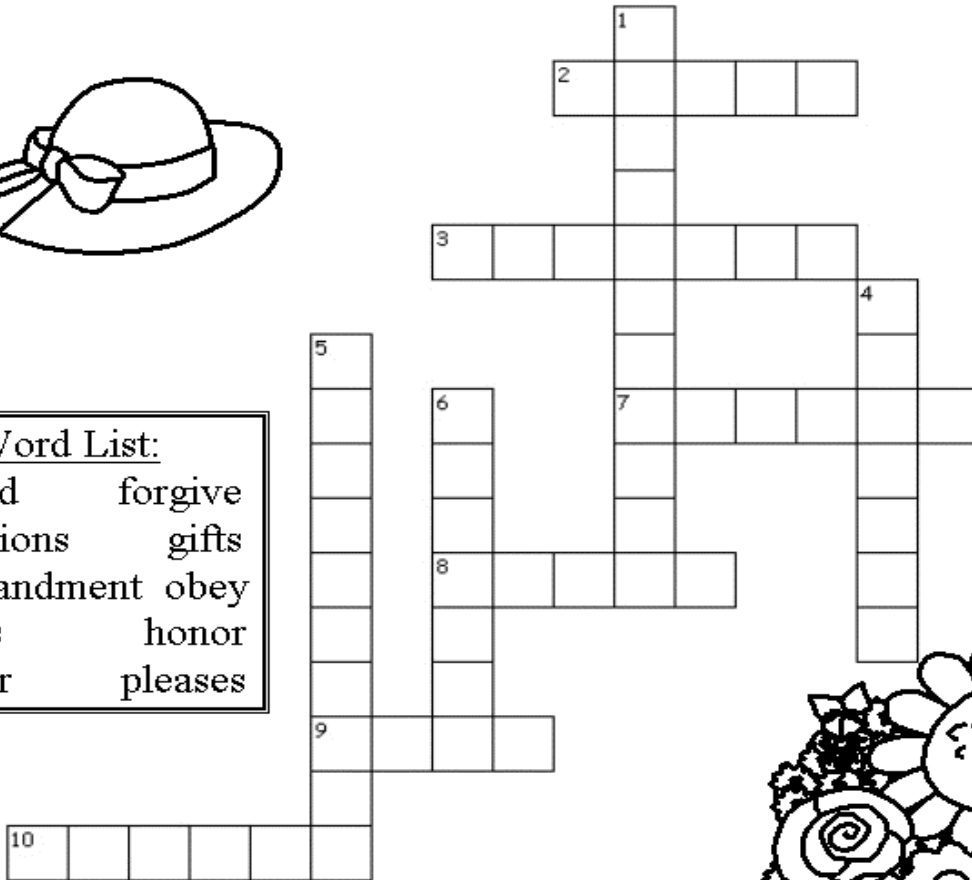
MAY 2017

Submitted by and Special Thanks to Debbie Sherman

# Mother's Day Crossword



Word List:	
blessed	forgive
carnations	gifts
commandment	obey
thanks	honor
mother	pleases



**Across**

- 2. We do this when we listen, obey, love, appreciate and forgive our mom.
- 3. It \_\_\_ God when children obey their parents in all things.
- 7. Someone super special to God and to you!
- 8. You don't need to buy your mom fancy \_\_\_ just give something from the heart.
- 9. You can make God and your mom happy if you listen and \_\_\_ what she asks.
- 10. Remember to do this when your mom does things for you.

**Down**

- 1. This rule or \_\_\_ says honor your father and mother.
- 4. "Her children arise and call her \_\_\_."
- 5. This is a popular flower on Mother's day started long ago.
- 6. Moms make mistakes sometimes, so don't forget to do this when she needs it.

*Junior Version - 2!*

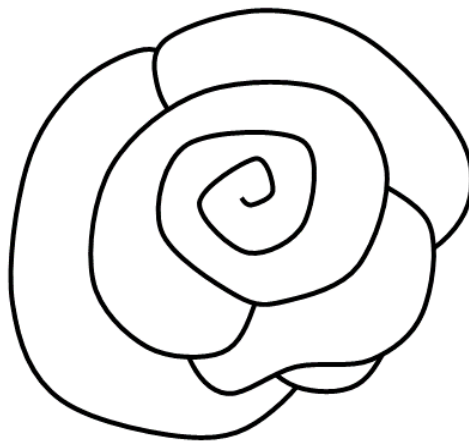
MAY 2017

Submitted by and Special Thanks to Debbie Sherman

# Mother's Day Word Search

R H H I A Z E B A P M Y S S C  
L E E E R P L V Q J R A T P A  
O O H O L E P Z I C O D F E R  
V D N T S P S R W G X I I C N  
E O X S O P Y P E K R L G I A  
H O E L P M A X E C S O V A T  
I D N E T S I L I C I H F L I  
T H A N K V G A S T T A R R O  
C O M M A N D M E N T H T S N  
Y E B O Y F P L E A S E S E S

APPRECIATE  
BLESSED  
CARNATIONS  
COMMANDMENT  
EXAMPLE  
FORGIVE  
GIFTS  
HELP  
HOLIDAY



HONOR  
LISTEN  
LOVE  
MOTHER  
OBEY  
PLEASES  
RESPECT  
SPECIAL  
THANK

*See Answers on Page 14*



## CLC ANNUAL PICNIC - CHURCH PICNIC DELAYED UNTIL SEPTEMBER...

The church picnic is being delayed until after Labor Day this coming September. The church calendar this year has been unusually busy and it seemed that it would be better to have a picnic in September. So, when summer is coming to an end, please look for announcements and sign-ups.

Fellowship Committee  
Karen Weiland



## CONGRATULATIONS TO OUR 2017 CONFIRMANDS...

On Sunday April 2, 2017 we celebrated the Rite of Confirmation of the following members:

Aliza Mary Kennelly  
Christian Bates Kjeldsen  
Aimee Katherine Shepard  
Aliza Natalie Taylor

We rejoice together as these youth mark this significant milestone in their personal and spiritual lives.



## PLEASE WELCOME OUR NEWEST MEMBERS TO THE LORD'S FAMILY...

We celebrate together as **Jameson Ryder Kingsley** was baptized into the Lord's family on Sunday April 23, 2017.

We welcome you into the Lord's family. We receive you as a fellow member of the body of Christ, child of the same heavenly Father, and worker with us in the kingdom of God.

## SUNDAY SERVICE REMINDER!



Please note the following changes to our Sunday Services:

- ✚ One Service—9:00 AM—Starts Sunday May 7th—Pastors Last Day!!!!
- ✚ One Service—9:00 AM through Labor Day September 2017
- ✚ Sunday School will be after the 9:00 AM services starting May 7 through June 11.
- ✚ Sunday School and 2 Services resume after Labor Day September 2017



## THIS MONTH IN OUR HISTORY!...

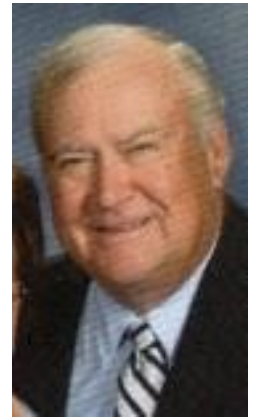
A monthly glimpse of the history of your Cheshire Lutheran Church:

May, 1959	Building Fund Campaign begun with 3-year pledges totaling \$23,000.
May, 1960	Pastor Louis Nuechterlein accepts call as Pastor

## NEWS FROM OUR EVANGELISM DEACON...

As we say goodbye to Pastor Gustafson and Kathy we must ask ourselves this question. Who will take the place of the Pastor in spreading evangelism? We know that the work of the church is conducted by the Pastor and church leaders. It is important to remember that all members of the congregation are responsible for conducting the affairs of our church. We must all work together to help spread the Gospel message of hope and salvation. It is easy to depend on the Pastor and other church leaders to do all the work, but in reality, it is each and everyone's duty to continue to do their part to grow Cheshire Lutheran. We have been serving the Cheshire community for over 60 years and we will continue to be an example of Christ's love for many more years with God's help.

John Balash  
Evangelism Deacon



## 2017 FLOWER CHART...

If you would like to place flowers on the altar on a particular Sunday, please sign up on the Flower Chart which is hanging on the Bulletin Board.



## *Mother's Day is Blanket Sunday...*

Let's celebrate our Mother's on Sunday May 14<sup>th</sup> and remember their warmth and kindness by dedicating blankets in their name to the Blankets+ Program. Your special gift of \$5 will enable the Church World Service organization to supply blankets to those who are facing hardship. To dedicate a blanket, please fill out the form that will appear in the Sunday bulletin beginning on Easter Sunday April 16<sup>th</sup>. All checks should be made payable to "Cheshire Lutheran Church" and placed in the "Blanket Box" located on the counter outside the church office along with the dedication form. Dedications will be listed in the May 14<sup>th</sup> bulletin.

Vicki DePaolo, Social Welfare Deacon



## GREETING CARD FUNDRAISER!

(A project of the Thursday Ladies Group)

A variety of greeting cards with Christian messages are for sale at \$1 each. These high quality cards are displayed in a rack on the counter outside the office. We will continuously update the selection which includes Birthday, Anniversary, Get Well, Sympathy, Thank You, seasonal and miscellaneous choices.

After making your selection, please leave your money or check in the box attached to the display.

The ladies thank the congregation for their generous support and hope to continue their record of giving to various church ministries.

We thank all for their support and especially thank those who leave large bills in the box.

Contact Persons; Rita Stark (272-3488) and Carolyn Bammann (272-7083).





## NEWS FROM OUR STEWARDSHIP DEACON...

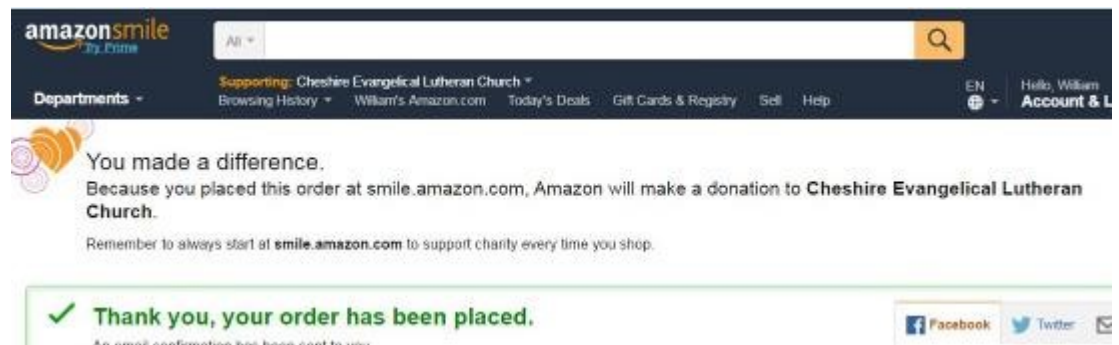
This month, our CLC Finance Committee would like to provide you with a couple of ways that you may not be aware of and that you can utilize to expand your individual stewardship efforts.

First: Use your talents to PLAY SOFTBALL!!!!



Second: If you happen to be an Amazon™ on-line shopper, Cheshire Lutheran Church is now a registered non-profit organization under the “Amazon Smile”™ program. So, whenever you shop on Amazon, go to [www.smile.amazon.com](http://www.smile.amazon.com), then log in, using your same username and password as you normally would on the traditional Amazon site. You will be asked to select a charity, by browsing the list of registered organizations and selecting Cheshire Lutheran Church. Amazon Smile will donate .5% (that is .005) of the amount you purchase to CLC.

Here is a sample of the screen that you will see after completing a purchase:



Again, the Amazon Smile website is [www.smile.amazon.com](http://www.smile.amazon.com)

Another way to expand your stewardship is through one of our church affiliated organizations:



The mission of Lutheran Church Extension Fund (LCEF) is to support the Church in fulfilling its mission of sharing the Gospel of Jesus Christ by being a Christ-centered servant partner of The Lutheran Church—Missouri Synod (LCMS), ensuring that funds and services are available now and in the future.

Funds invested in LCEF are used to make loans to churches, schools, colleges, seminaries. LCEF reports that more than 80% of LCMS congregations have been helped by LCEF. We at CLC are in that group as, in 1995, our parsonage mortgage loan came from LCEF and we recently invested monies for our “Capital Fund” in a new “PartnerPLUS” account, which is described below.

LCEF receives its funds from individuals and organizations through various forms of investments which have two things in common:

LCEF loans funds to ministries of the LCMS and

LCEF investments pay a competitive rate of interest.

Two of LCEF’s current investment choices for new investments offer interest rates that are more than what banks are currently offering and are summarized here:

[Selected features of ConnectPLUS term note:](#)

*(Continued on page 15)*

*(Continued from page 14)*

Available to new LCEF investors, meaning individuals 18 and older who have not had an LCEF investment in the past 24 months, One account per investor.

<u>Investment range</u>	<b>Term</b>	<b>April 2017 Rates</b>
\$500 to \$5,000	2 years	3.00%
Amount over \$5,000 earns second-tier rate	---	1.00%

Selected features of PartnerPLUS term note:

Available to individuals 18 and older; one account per investor. Transfers from other LCEF investments are not accepted.

<b>Investment range</b>	<b>Term</b>	<b>April 2017 Rates</b>
\$500 to \$25,000	2 years	2.00%
\$500 to \$25,000	4 years	2.50%



For more information, visit the Lutheran Church Extension Fund web site at [www.lcef.org](http://www.lcef.org) or call LCEF at 800-843-5233.

LCEF is a nonprofit religious organization; therefore, LCEF investments are not FDIC-insured bank deposit accounts. This is not an offer to sell investments, nor a solicitation to buy. The offer is made solely by LCEF’s Offering Circular. Investors should carefully read the Offering Circular, which more fully describes associated risks.

David Veleber  
Stewardship Deacon

## PLEASE CONTRIBUTE TO MAKING THIS NEWSLETTER A SUCCESS!!

**(Summer 2017 Articles are Due!)**

Time to plan for the summer!! The next issue of the Heavenly Herald will represent our Summer edition. That’s **June, July and August** news and events to consider.

Please electronically submit ALL articles and information to Beth Soulier ([soulierbeth@sbcglobal.net](mailto:soulierbeth@sbcglobal.net)) by **May 26<sup>th</sup>** or earlier! Place all non-electronic articles and information you would like printed into the HH in Beth’s lateral file folder on the hallway table.



Thank You!

## CANS AND BOTTLES—BOTTLES AND CANS...

Save your returnable Bottle and Cans. Money raised will benefit Little Cherubs. A collection box is located in the storage closet towards the back of the Fellowship Hall.



# Our Sincere Appreciation



- ✦ Very special and loving thanks to the Thursday Afternoon Ladies for assembling the April Heavenly Herald. BIG HUGS!
- ✦ Many thanks to all who came to help clean the inside and outside of the Church in time to make our Easter Services EXTRA Special
- ✦ Special thanks to the Fellowship Committee for organizing the Easter Breakfast. We also thank Don and Diane Drust for all they contribute so that the food never runs out and the décor enhances the Easter atmosphere. The Fellowship was wonderful and the volunteers are greatly appreciated. Also thanks to everyone who baked, set up, cleaned up, decorated. It was a joyous Easter Morning!
- ✦ Many thanks to Jon Manke for his very generous contribution of the beautiful Easter Lillies that adorned our Altar and the flowers that were given to the Sunday School children on Easter Morning!
- ✦ Thanks to all who participated in the music ministry, both volunteer and professional during Easter services.
- ✦ Thank you as always to Tim Weiland for his beautiful photography that chronicle all the activities that take place at CLC
- ✦ An additional thanks to Steve Feero and Bill Juul for doing such a great job with keeping our Website up to date

## ON THE BULLETIN BOARD:

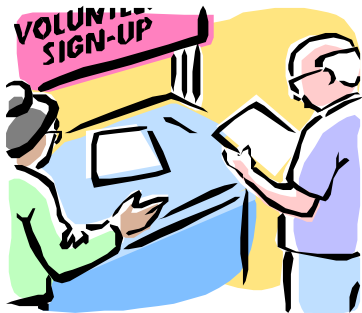
*Remember to check the Bulletin Boards and/or hallway table for sign-up sheets and information about various events!*

### ***This month on the Bulletin Board:***

- ✦ **Cheshire Strawberry Festival**—Craft Fair Information
- ✦ **Cheshire Food Drive** Volunteer info. and sign-ups
- ✦ VBS Information
- ✦ **LCEF Lunch and Learn** Information
- ✦ **National Day of Prayer** Information
- ✦ **CWS Blanket Sunday** Information
- ✦ **CLC Spirit Softball** Sign up Sheet—Schedule
- ✦ **New England LCMS Preparedness Workshop** Information
- ✦ **Sunday Morning Greeters:** Are especially needed now that we are in transition. Prayerfully consider being a Sunday Morning Greeter!
- ✦ **Hope Center** 2017 volunteer sign-ups
- ✦ **1st Sunday Food Drive** Sign-Ups
- ✦ **Sunday Coffee Hour** Sign-Ups
- ✦ **Mountain Laurel Zone** Spring Rally Information
- ✦ **2017 Usher** Schedule

### ***Others looking for help!***

- ✦ **Fellowship Deacon needs volunteers** to help make the events happen. Contact Karen Weiland if you can help in any capacity. 203-250-1574 or email [kweiland3@sbcglobal.net](mailto:kweiland3@sbcglobal.net)
- ✦ **Helping Hands** - Contact the Church Office if you would like to be a member of the helping hands committee.
- ✦ **Sunday School Teachers Needed**—Prayerfully consider serving our congregations children by volunteering to Teach them a few Sunday mornings during the year. See Carlene Myers





# MEET OUR MISSIONARIES...

J.P. and Aimee Cima and their children Serving the Lord in Vietnam

The third week of the SOLEAD program focused on understanding leadership styles through the DISC profile. Students learned about the strengths and weaknesses of different leadership styles, as well as how to apply that information in a team.

The fourth session was facilitated by a seasoned counselor and social worker from Singapore, Michael Ong, who has lived in Hanoi for 17 years. The session focused on active listening skills in a group setting. Michael shared practical information that will benefit students as they work on group projects, as well as in their personal lives.

LCMS is glad to provide this unique experience for students of Bach Khoa University in order to equip them to be change makers in Vietnam!

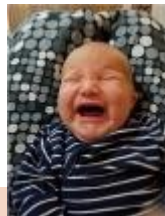


On March 7, LCMS staff began the third year of leadership training with students at the Hanoi University of Science and Technology. The SOLEAD program is geared toward preparing university students to identify social issues in their school or community and equipping them with skills and resources to address these issues.

The training program, which takes place Tuesday evenings over 8 weeks, will culminate in a week-end long retreat where students will solidify their ideas for social projects through additional training and one-on-one coaching.

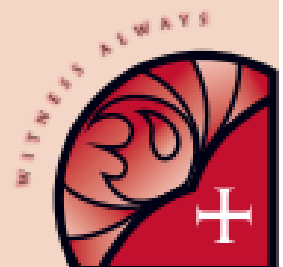
The first two sessions were foundational for understanding what leadership is, how it works in teams (notice the pictures of team activities!), and how it can be used for positive change.

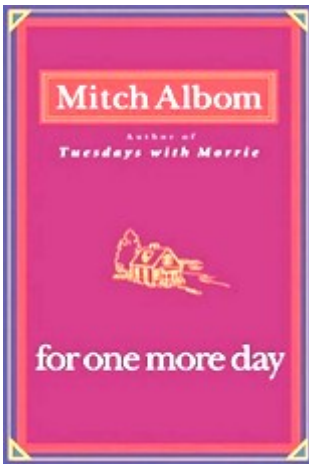
University students continue to express a need and desire for 'soft skills' training as the educational system in Vietnam is mainly focused on academics. LCMS hopes that as we equip students with these very practical skills, that they will apply the skills in order to create positive change in their communities.



- Pray daily for J.P. and Aimee — and how you can support and tell others about their ministry. Visit [lcms.org/cima](http://lcms.org/cima)
- Learn about LCMS international work at [lcms.org/international](http://lcms.org/international)
- Support and adopt an international worker. Call 888-930-4438.

LEARN • PRAY • GIVE • TELL • SEND • GO • CELEBRATE





## CLC ANNUAL WOMEN'S RETREAT 2017...

Our 10<sup>th</sup> Annual CLCW Retreat will be held on Saturday May 20<sup>th</sup> at the Guest House and Conference Center in Chester, CT.

The book we will be reading this year is *For One More Day*, by Mitch Albom. *For One More Day* is the story of a mother and a son, and a relationship that covers a lifetime and beyond. It explores the question: What would you do if you could spend one more day with a lost loved one? A sign-up sheet will be posted on the bulletin board in April for those planning to attend. I hope you will plan to join us for an inspiring day with the women of CLC.

The registration fee including lunch is \$40.

Please call me if you have any questions. Vicki DePaolo - 203-697-0810

## REVISED 2017 USHER SCHEDULE ...

We will be adopting a one service schedule starting May 7. Since there will be higher attendance we need to have more ushers at each service. If you cannot make service, please try to arrange a replacement and notify head usher.

May 9:00 a.m.  
Diane Drust  
Don Drust  
Paul Smith  
Tim Weiland \*

July 9:00 a.m.  
Jim Mertz \*  
Jeff Mann  
Dave Veleber

September 9:00 a.m.  
John Shepard  
Jim Schaff  
Al Mayer \*  
Jon Tessler

November 9:00 a.m.  
Buzz Gancarz  
Kurt Lenz  
Larry Fiedler\*  
Paul Fiedler

June 9:00 a.m.  
Paul Emerick  
Bill Sherman \*  
Guy Mason

August 9:00 a.m.  
Ed Schweizer \*  
Nancy Schweizer  
Richard Hagstrom

October 9:00 a.m.  
Don Dobbs  
Andrew Clark  
Rob DeLaubell \*  
Curtis Pryde

December 9:00 a.m.  
Cliff Ongley  
John Shepard  
Joe Stark  
Tim Weiland \*

\* Denotes Head Usher for the month

## 2017 CLC SPIRIT SOFTBALL SEASON OPENS...



The 2017 Softball season is upon us, consider joining the team or help cheer on CLC's own "Spirit" at the 6 pm Sunday evening games. We will play on at various fields in Cheshire and Hamden during the end of April thru June (except Mother's Day and Memorial Day).

Look for more information on the bulletin board.

If you are 15 years or older and interested or need more information contact CLC Team Captain Dave Veleber (203) 271-3111 or [dveleber@cox.net](mailto:dveleber@cox.net).

## LITTLE CHERUBS PRESCHOOL REGISTRATION...



Registrations are being accepted for the 2017-2018 school year. If you, or someone you know, have a child who is preschool eligible, please call the church or preschool office for more information, or pick up a registration packet from the hallway counter. Take a look at the preschool area if you are not familiar with it. Look at the bulletin board outside the church office to see the artwork made by the children and pictures of them in action during class time located on the bulletin board located outside the narthex. We have a great program with wonderful teachers!





# Congregational Member Survey Reminder!!!!

Don't' forget to complete the ONLINE Congregational Member Survey! If you have questions or are apprehensive about completing the Survey Online, see Beth Soulier or Steve Feero. We will be HAPPY to assist you.

Type the following link into your computer browser to access the Survey:

<http://cheshirelutheran.org/callsurvey>

Surveys must be completed by Monday May 8, 2017

Your input is CRITICAL to the Call Process!

## NEW ON OUR WEBSITE...[WWW.CHESHIRELUTHERAN.ORG](http://WWW.CHESHIRELUTHERAN.ORG)

The following has been recently added to our Website:

- ✚ Audio recordings of Anthems sung by our Choirs last month—Check out all the selections from Holy Week and Easter
- ✚ Current and Past Heavenly Heralds
- ✚ Photos from recent Baptisms and Sunday School
- ✚ Photos from Confirmation
- ✚ Photos from inside and outside clean up
- ✚ VBS Information—Sign-Ups



## NEED TO GET INFORMATION TO CERTAIN MEMBERS OF OUR CONGREGATION?

Just slip your information or a note into one of the folders on the hallway table outside the church office. Folders have been created for each of the council members, Beth Soulier (the editor of this newsletter) and a few others and placed outside the office. We have found that this is a great way to distribute information within the congregation.



# Easter 2017 Memories





As you know, our Call Committee has been meeting weekly since early February. It is critical that the Committee keep the Congregation informed on status and progress towards choosing a list of candidates for the Congregation to vote on.

If you have any questions, please feel free to contact any member of the committee. We will be happy to assist you.

**The Cheshire Lutheran Church Call Committee:**

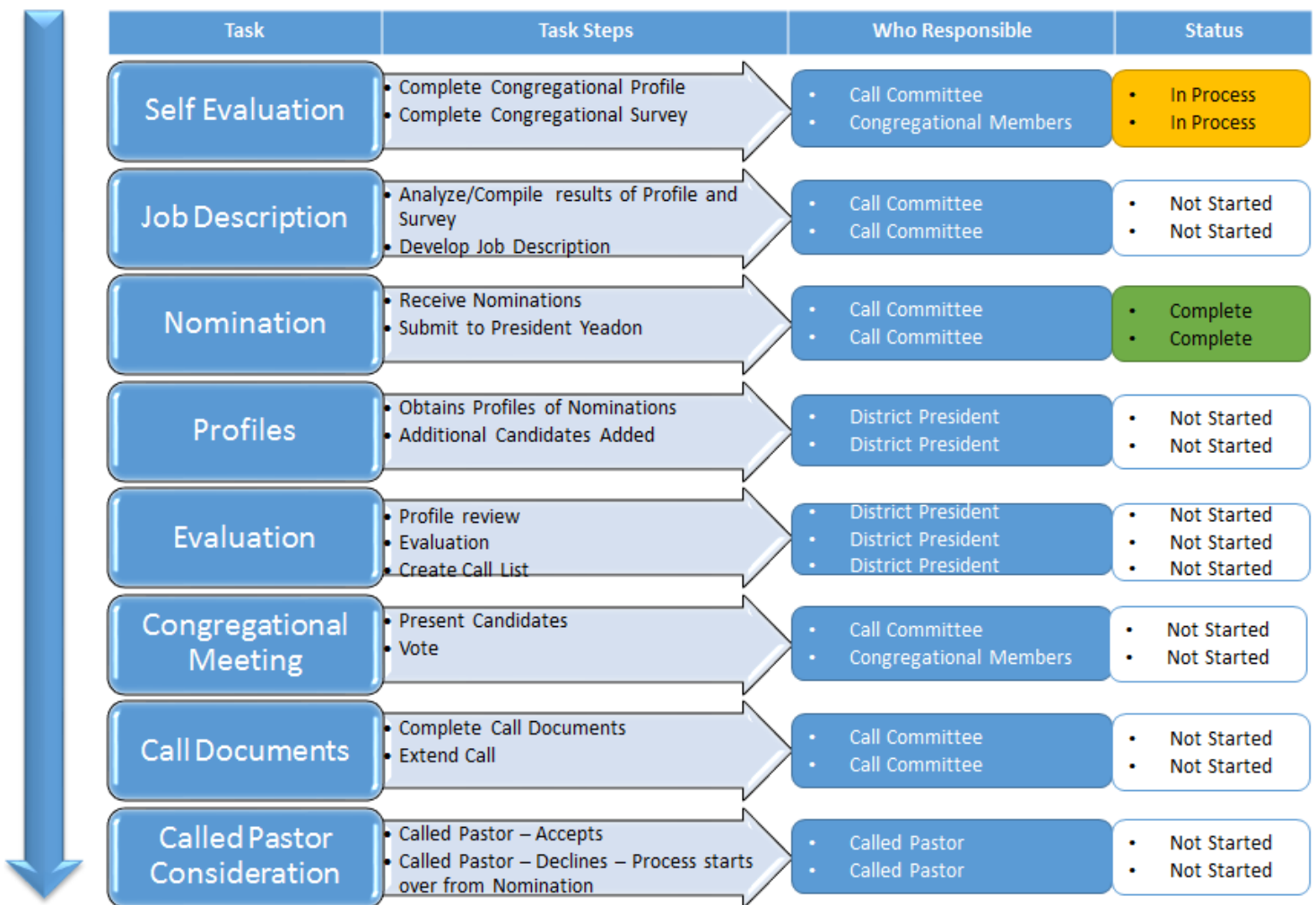
- Pat DiDomizio (jdidomizio@aol.com or 203.881.8399)
- Carol Santoro (office@cheshirelutheran.org or 203.228.8124)
- Beth Soulier (soulierbeth@sbcglobal.net or 860.338.5970)
- Don Drust (don.drust@wakefern.com or 203.272.0054)
- Steve Feero (steve@feero.com or 203.213.7753)

**Alternates :**

- Ethel Daly (edaly316@gmail.com or 203.272.4543)
- Ed Schweizer (eschweizer@snet.net or 203.272.9947)
- Craig Wilson (craig.wilson0110@gmail.com or 203.272.8903)

Below is Task List of activities the Call Committee and You the Congregation must complete to Call a new Pastor to Cheshire Lutheran.

## Call Process at Cheshire Lutheran Church



We will also update you in Sunday Bulletins and on the Bulletin Board....

## THANK YOU FROM: CARE PACKAGES FOR THE TROOPS...

Dear Friends,

Whoever would have thought that when we began this project in October of 2005 we would still be adopting and caring for deployed soldiers? I can assure you that we had no idea where the project would take us; our packages have travelled to both Iraq and Afghanistan. While we, ourselves, have never been, based on the notes and pictures we have received, I feel as if I am getting familiar with the terrain and the weather. After all, when filling the bags, we need to know how hot it is so simple treats such as chocolate won't melt or that home-made breads and cakes won't turn moldy in transit...I learned through experience!



**Soldier Support Packages**

2015 was a banner year for "Soldier Support Packages". Pediatric offices, a manufacturing company, non-profit service groups, a few schools, a gym, boat club auxiliary, local large nationwide businesses and dental equipment suppliers, small, independently owned establishments, a church whose members I do not even know, and friends and family have reached out to us, offering help. It does my heart good when I have to spend so much time sorting toiletries and snacks. The Stratford Post Office made it easy to mail for the holidays by opening its doors to me at 6:30 AM. It took a full week but the big mailing for the holidays was completed seamlessly. There I was, behind the counter handing off our boxes and loading the postal wagons! What a timesaver that was ... and service with a smile, at that.



Also, for the first time, new friends offered to help with the packing and surprised as you may be, I said "yes". We filled quart-sized food bags to the brim with messages on the side wishing our soldiers well and thanking them for their serviced. You can be sure that they received creative, delicious and useful packages from us.

Once the 82nd Combat Aviation Brigade (CAB) re-deployed, we adopted the 101st CAB for the 4<sup>th</sup> time, a special operations unit and its headquarters, all in Afghanistan. The 101<sup>st</sup> has returned home, replaced by the 4 ID CAVN BDE from Fort Carson. With the 1<sup>st</sup> Infantry headquarters re-deploying, we adopted the 82nd Airborne Division stationed in Iraq; as of this writing, it has been replaced by Headquarters 101<sup>st</sup> Airborne Division. Through each of these deployments we find ourselves seeing the same people and taking pride in their promotions and accomplishments. As our adopted family expands, it gets smaller at the same time and it is true.

In the words of some of the soldiers: "I wanted to thank you for the care package that you sent just before Christmas. It had all kinds of goodies which I really appreciated and enjoyed, especially the coffee! You guys have done a great job sending packages to all of us here and the time and effort you have gone to in putting them together and mailing is something I'm thankful for."

"Thanks for thinking about our female soldiers on Valentine's Day! It was a special touch to the care package".

"We appreciate your thoughts, prayers, and care packages. We definitely felt the LOVE and support".

People have asked how long we plan on doing this and my answer is always the same -- I will continue as long as there is need and I am able. I would, and could, never think of letting down our soldiers, never want them to think they are away in distant and dangerous places, forgotten. The highlight for me is an e-mail or note saying "thank-you, it helps us to complete our mission knowing people at home care".

So, I thank you from the bottom of my heart for your financial support, your outreach, your extra two hands and your caring for our soldiers. Please, as you remember them, think about their families who are the unsung heroes of any deployment. What they do is truly beyond anyone's wildest dreams and they, too, need our thanks.

I look forward to re-connecting during the year. You can be sure you will hear from me. With deepest gratitude,

Carol S. Weinshel



## CARE PACKAGES FOR THE TROOPS...

Carol Weinschel of Fairfield has supported over 35,000 soldiers from her house, primarily with Combat Aviation Brigades (CABs). These soldiers have been deployed numerous times with the 159th, 82nd, 101st, 16th and 1st CAB. Currently, she has adopted a headquarters unit from the 1st Infantry Division, the 82nd CAB, a special operations group and a combined joint task force from the 3rd Infantry Division. Soldiers continue to need the items we take for granted – toothbrushes, toothpaste, dental floss, lotion, soap, female items, emery boards, small notepads, hand wipes, tissues, snacks, gum, powdered drink mix (individual packets), coffee, cough drops, band-aids and always contributions towards postage. Treat bags have transformed from children's party bags to quart-sized bags; travel-size items are best for packing. In the words of one of the commanders: “thanks for all you do and your gifts were definitely heartfelt and on point”. Our soldiers continue to need our support and it is with the most sincere appreciation that I thank the Church in advance for your answering the call. You folks are truly the best.



We will be collecting the items to support this project at Church in May. You can choose any or all of the following items:

- |  |   |
|--|---|
| ✦ Band-Aids  | ✦ Money for Postage   |
| ✦ Batteries  | ✦ Mouthwash   |
| ✦ Beef Jerky                                       | ✦ Pens (ball point)   |
| ✦ Chap-stick                                       | ✦ Phone Cards (International)                                     |
| ✦ Coffee/Tea/Hot Chocolate                         | ✦ Powdered drink mixes  |
| ✦ Cotton balls                                     | ✦ Power Bars  |
| ✦ Cough Drops                                      | ✦ Q-tips  |
| ✦ Crossword Puzzles                                | ✦ Shampoo   |
| ✦ Dental Floss                                     | ✦ Shaving Cream/Razors  |
| ✦ Dried Fruit                                      | ✦ Snacks (individual size pretzels, peanuts, chips, granola bars) |
| ✦ Eye Drops  | ✦ Soap/body powder/foot powder                                    |
| ✦ Eyeglass wipes                                   | ✦ Toothbrushes & toothpaste                                       |
| ✦ Frisbees (small size)                            | ✦ Trail Mix   |
| ✦ Greeting Cards (birthday, get well, anniversary) | ✦ Wet Ones (individually-wrapped)                                 |
| ✦ Gum  | ✦ Word Searches   |
| ✦ Mechanical pencils                               |   |



For additional information contact Holly Flugrath or Dorothy Dierolf.

## CLC HELPING HANDS...

The Helping Hands committee is looking for a new Chairperson and others to help coordinate. Kindly consider this wonderful opportunity. Contact the church office if you are interested.

If you are in need of help please call on our Helping Hands committee. Please call the church office and arrangements will be made for meals to be made and delivered to you by our committee.

Whether this need is the result of a hospital stay, a new baby arrival, or a recent loss of a loved one, we want to support you during your critical time.

*Therefore, as we have opportunity, let us do good to all people, especially to those who belong to the family of believers. -- Galatians 6:10*







## COLUMBARIUM AND MEMORIAL GARDEN NEWS...

If you are interested in reserving a niche, purchasing a memorial plaque, or making a donation to beautify and maintain the Columbarium and Memorial Garden. Now is the time to speak to any member of the Columbarium Committee to confirm your interest in supporting and participating in this ministry. The Committee is now accepting applications for niches and memorial plaques. Monetary donations will be thankfully accepted toward landscaping and "hardscaping" the Memorial Garden.

Please feel free to contact any Committee member below to request more information or to obtain an application. The Committee thanks the members and leaders of Cheshire Lutheran Church for their vision and support of the Columbarium and Memorial Garden.



Don Drust, Chair	Buzz Gancarz	Priscilla Mulvaney
Vicki DePaolo	Linda Gancarz	Randy Raddatz
Judy DiDomizio	Margie Mertz	Beth Soulier
Pat DiDomizio	John Mulvaney	Tim Weiland

### Procedures:



You will find a box containing blue folders on the hallway counter. One folder contains inurnment procedures and the other contains memorial plaque procedures. Both folders also include fee schedules and the CLC bylaws concerning the columbarium wall. Please take whichever folder interest you and review it carefully.

If you have any questions or when you feel prepared to commit to the project, please contact Pat DiDomizio.

## Answers from Page 9:

**Answers: A.** 1. Perish 2. Purpose 3. Patient, Proud 4. Prosper 5. Peace

**B.** 1. Peter 2. Paul 3. Timothy 4. Stephen

Final Q.: M. L. is buried in All Saints' Church, commonly referred to as *Schlosskirche* (Castle Church). On Luther's tomb, located beneath the pulpit, is inscribed "Here is buried the body of the Doctor of Sacred Theology, Martin Luther, who died in the year of Christ 1546, on February 18th, in his hometown Eisleben, after having lived for 63 years, 2 months, and 10 days.(source: Wikipedia)



## CLC MUSICAL OFFERING...

Music performed during Sunday morning services, is sometimes recorded and then emailed to a number of people. Most computers will recognize the mp3 music file and play it back. It is especially appreciated by those who are not able to be with us on a given Sunday.

If you are interested in receiving an occasional musical offering, please send an email to: [juul@cox.net](mailto:juul@cox.net) with "CLC Music" in the subject line. Recipient addresses will not appear in the music email.

We would be happy to include you.

Judy & Bill Juul

# Bible Studies at CLC

## SUNDAY MORNING BIBLE STUDY...

Join us on Sunday mornings at 10:10 for our Adult Bible Study.



## TUESDAY EVENING BIBLE STUDY...

Join us for Tuesday Bible Study at 7pm. Jim Mertz will lead the sessions each week through June 6, 2017.

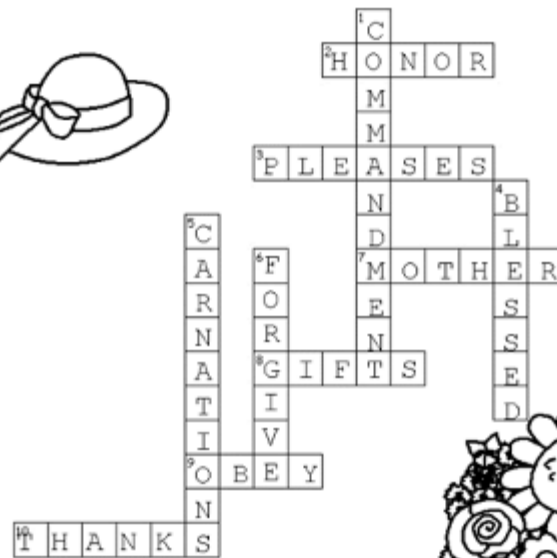
## THURSDAY MORNING ADULT BIBLE STUDY GROUP...

Our Thursday morning Adult Study Group is on hold for now. Look for updates about this Bible Study in the Sunday Bulletins/Bulletin Board and Summer Heavenly Herald.



Answers from Page 10:

## Mother's Day Crossword



**Across**

2. We do this when we listen, obey, love, appreciate and forgive our mom.
3. It \_\_\_\_ God when children obey their parents in all things.
7. Someone super special to God and to you!
8. You don't need to buy your mom fancy \_\_\_\_ just give something from the heart.
9. You can make God and your mom happy if you listen and \_\_\_\_ what she asks.
10. Remember to do this when your mom does things for you.

**Down**

1. This rule or \_\_\_\_ says honor your father and mother.
4. "Her children arise and call her \_\_\_\_."
5. This is a popular flower on Mother's day started long ago.
6. Moms make mistakes sometimes, so don't forget to do this when she needs it.

# HAPPY ANNIVERSARY

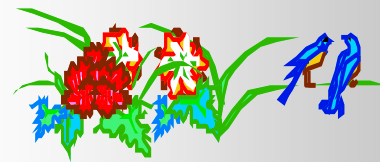
## May 2017

**BIRTHDAYS**

- 3<sup>rd</sup> Michael Plantier
- 6<sup>th</sup> Carolyn Bammann
- 7<sup>th</sup> Pastor Gustafson  
Norm Benedict
- 11<sup>th</sup> John Greenhalgh
- 12<sup>th</sup> Kristen Green
- 15<sup>th</sup> Janet DeLaubell
- 17<sup>th</sup> Edyth Izard
- 18<sup>th</sup> Kristen Donewald  
Emily Soulier
- 20<sup>th</sup> Ernest Josephson  
Cynthia Pryde  
Beth Soulier  
Allyssa Hajjar
- 21<sup>st</sup> Vanessa Falk  
Nancy Feero
- 22<sup>nd</sup> Richard Hagstrom  
Katelyn Lynch
- 24<sup>th</sup> Nancy Cirno
- 28<sup>th</sup> Megan Smith
- 29<sup>th</sup> Donna Quast
- 30<sup>th</sup> Kyle Fiedler
- 31<sup>st</sup> Julianna Tyler



1 <sup>st</sup>	Glenn & Carlene Myers	34 Years
13 <sup>th</sup>	David & Mary Beth Blair	11 Years
18 <sup>th</sup>	Larry & Barbara Fiedler	49 Years
22 <sup>nd</sup>	Ray & Nancy Cirno	41 Years
25 <sup>th</sup>	Rob & Janet DeLaubell	25 Years
29 <sup>th</sup>	Todd & Christina Plantier	17 Years
30 <sup>th</sup>	Frank & Marilyn Miller	57 Years



THANKS TO OUR  
VETERANS AND  
SOLDIERS

IN MEMORY OF  
MANY, IN HONOR  
OF ALL

## COUNCIL MEETING REMINDER...

Mark your calendars, May *Council* meeting will be held, Tuesday May 9<sup>th</sup> at 7:00 pm



**Cheshire Lutheran Church**  
660 West Main St  
Cheshire CT 06410