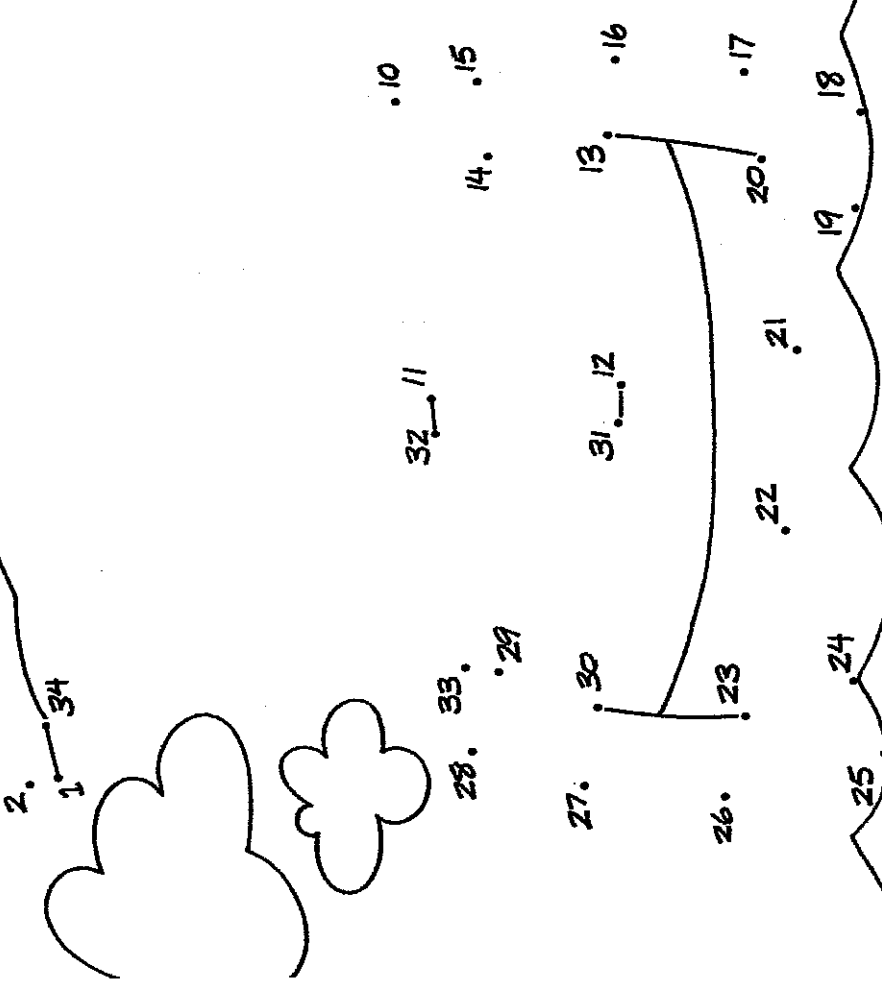


DOT to DOT

Jesus and the apostles traveled in something to get to a quiet place. Connect the dots to find out what it was.



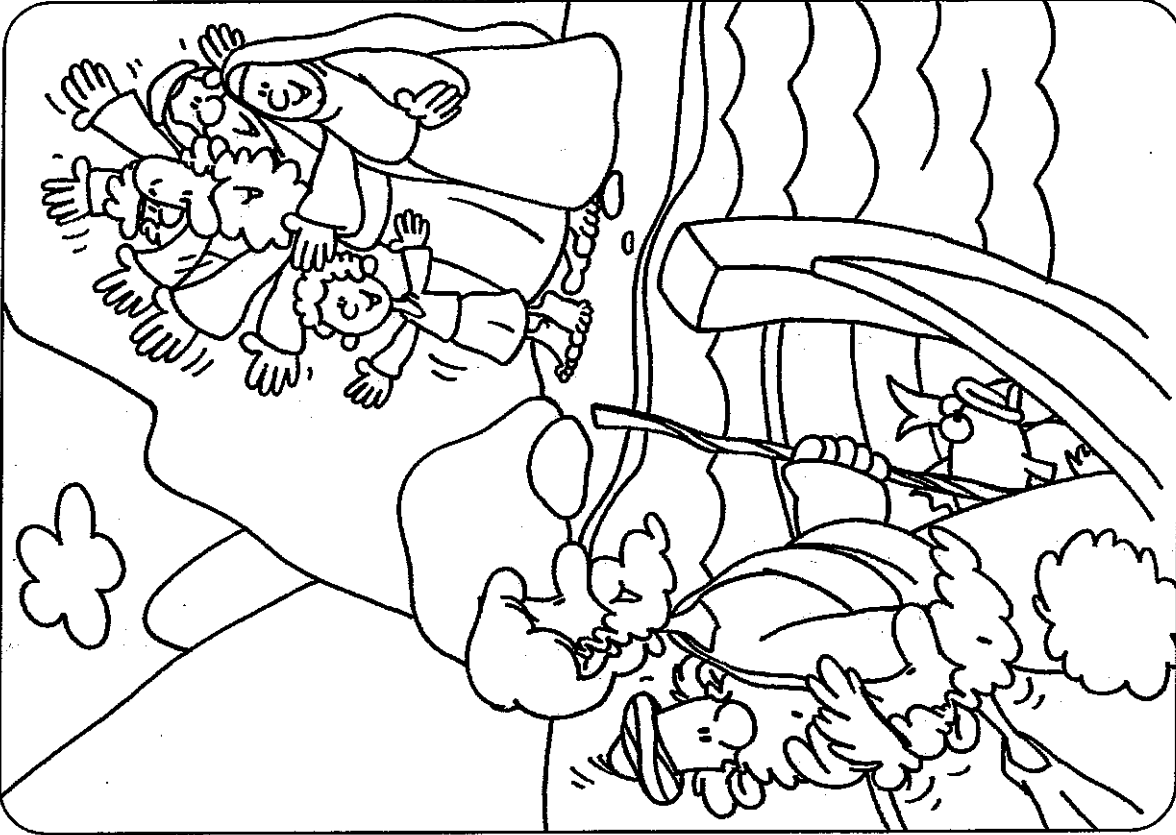
ANSWERS

WORD SEARCH

S	E	M	L	S	O	P	A	V	
L	B	O	B	Z	I	N	I	G	T
T	O	B	O	S	E	S	I	O	
O	N	O	E	N	I				
D	W	O	R	E	S				
P	L	E							
B	L	T	H	T	V				

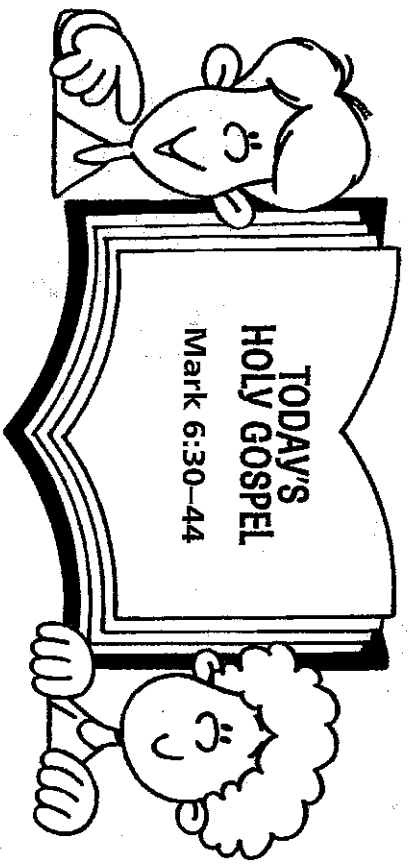
HIDDEN MESSAGE
THEY WERE LIKE SHEEP WITHOUT A SHEPHERD

9th Sunday after Pentecost



When He went ashore He saw a great crowd, and He had compassion on them, because they were like sheep without a shepherd. Mark 6:34

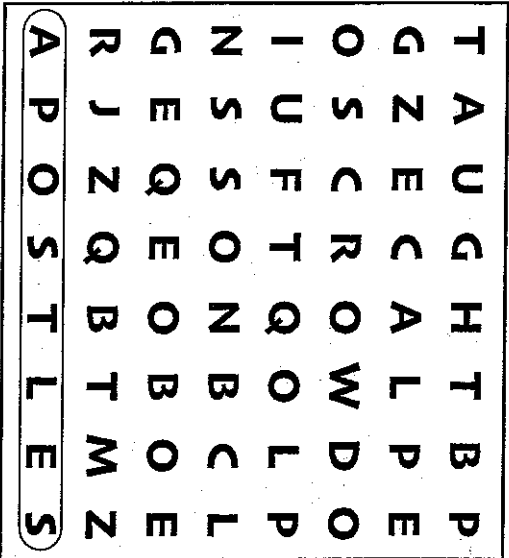
NAME: _____



WORD SEARCH

Try to find 11 words from today's Holy Gospel in the puzzle. You may go up or down, from side to side, or diagonally. Circle each word as you find it and mark it off the list. One word has been done for you.

- APOSTLES**
 DONE
 FOOT
 REST
 CROWD
 JESUS
 COME
 PLACE
 GOING
 PEOPLE
 TAUGHT



HIDDEN MESSAGE

Jesus felt sorry for the large crowd of people. To find out why, circle every third letter in the puzzle and write the letters on the lines below. Then divide them into words and find out what Jesus said about the people.

C A T C H H A Y
 E E R Y B O W L
 R E M A R K M E
 C A L L S I N K
 K N E L L A S K
 C H I M E L A S K
 A P P P O W E R I
 I N I T T O H I
 N O B I B U R S T
 C H A I R S T O
 S H E R E L A P S
 N O D E B A R

